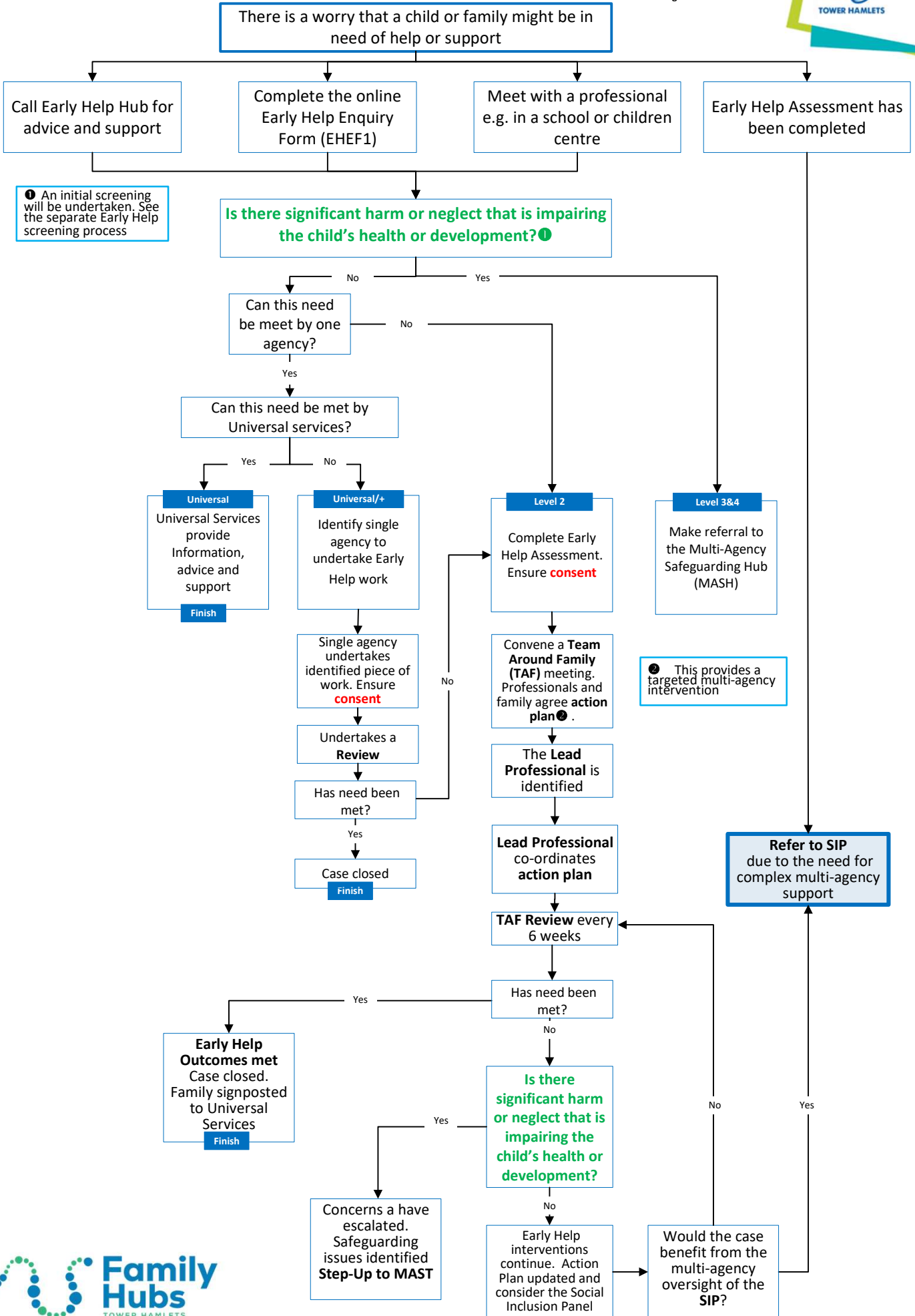


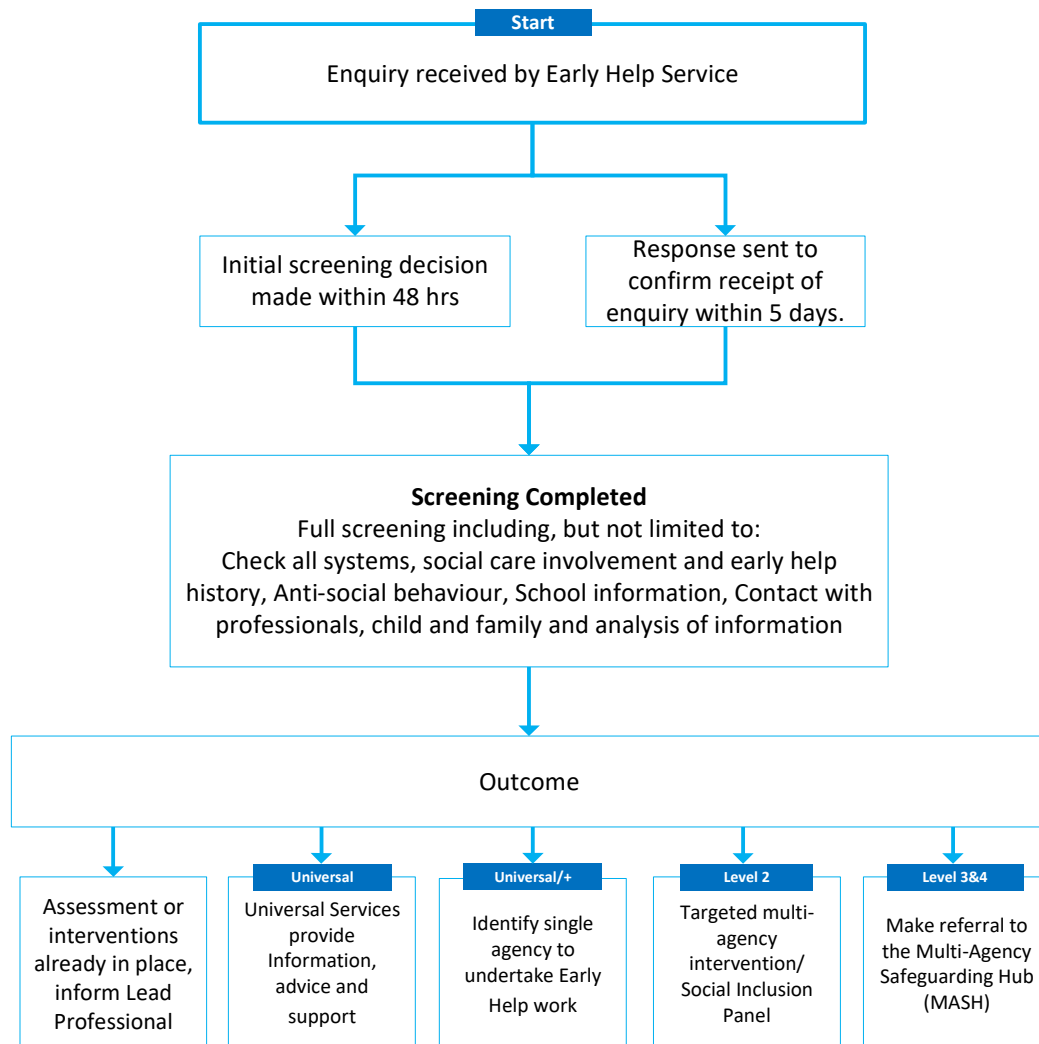
Tower Hamlets Early Help Flow Chart

21st August 2023 V1.10



MAST Universal Screening Process

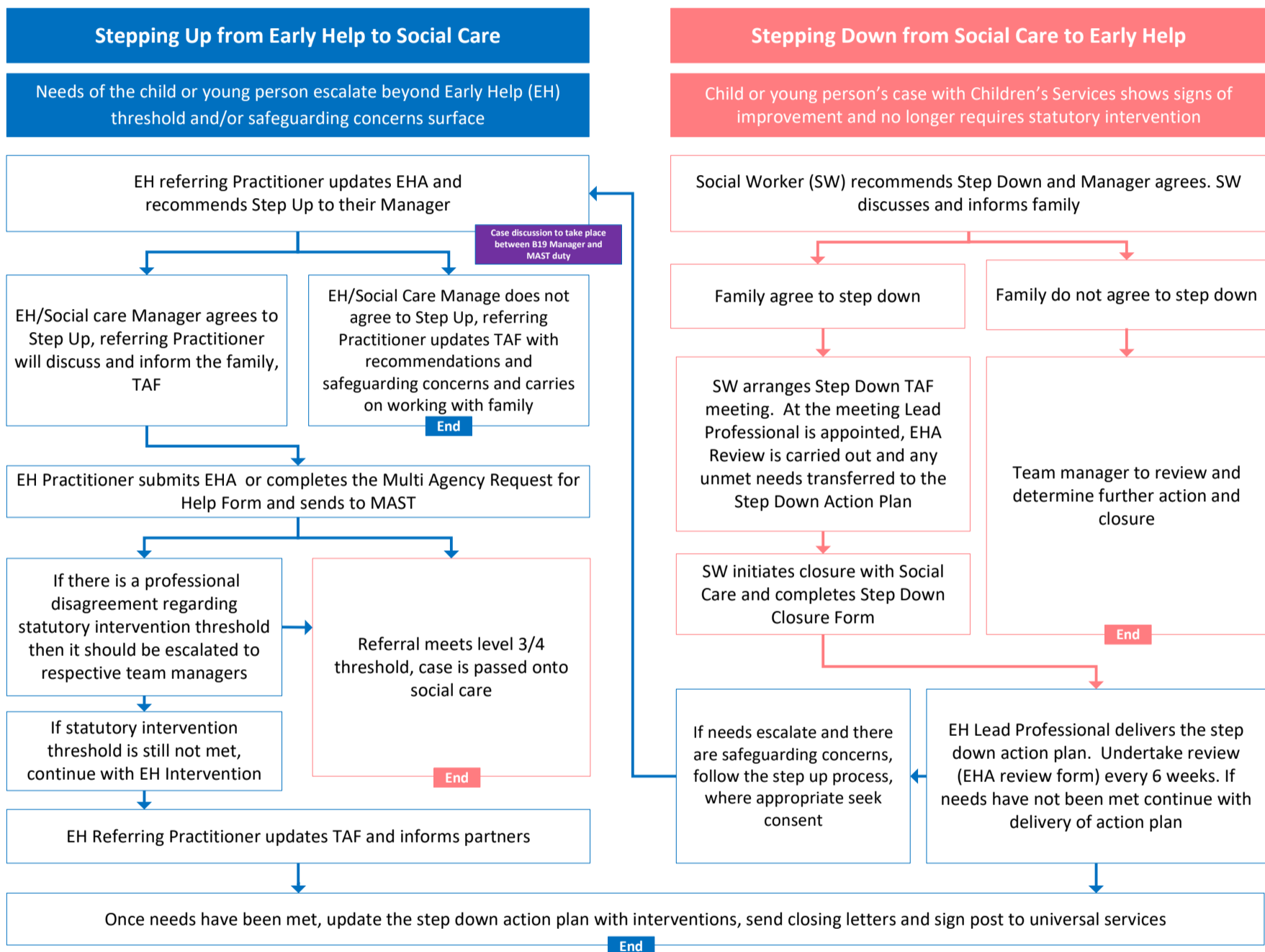
Date: 21st August 2023 V1.10



Tower Hamlets Step Up Step Down

Early Help & Children and Family services and Children's Social Care

Date: 21st August 2022 V1.10

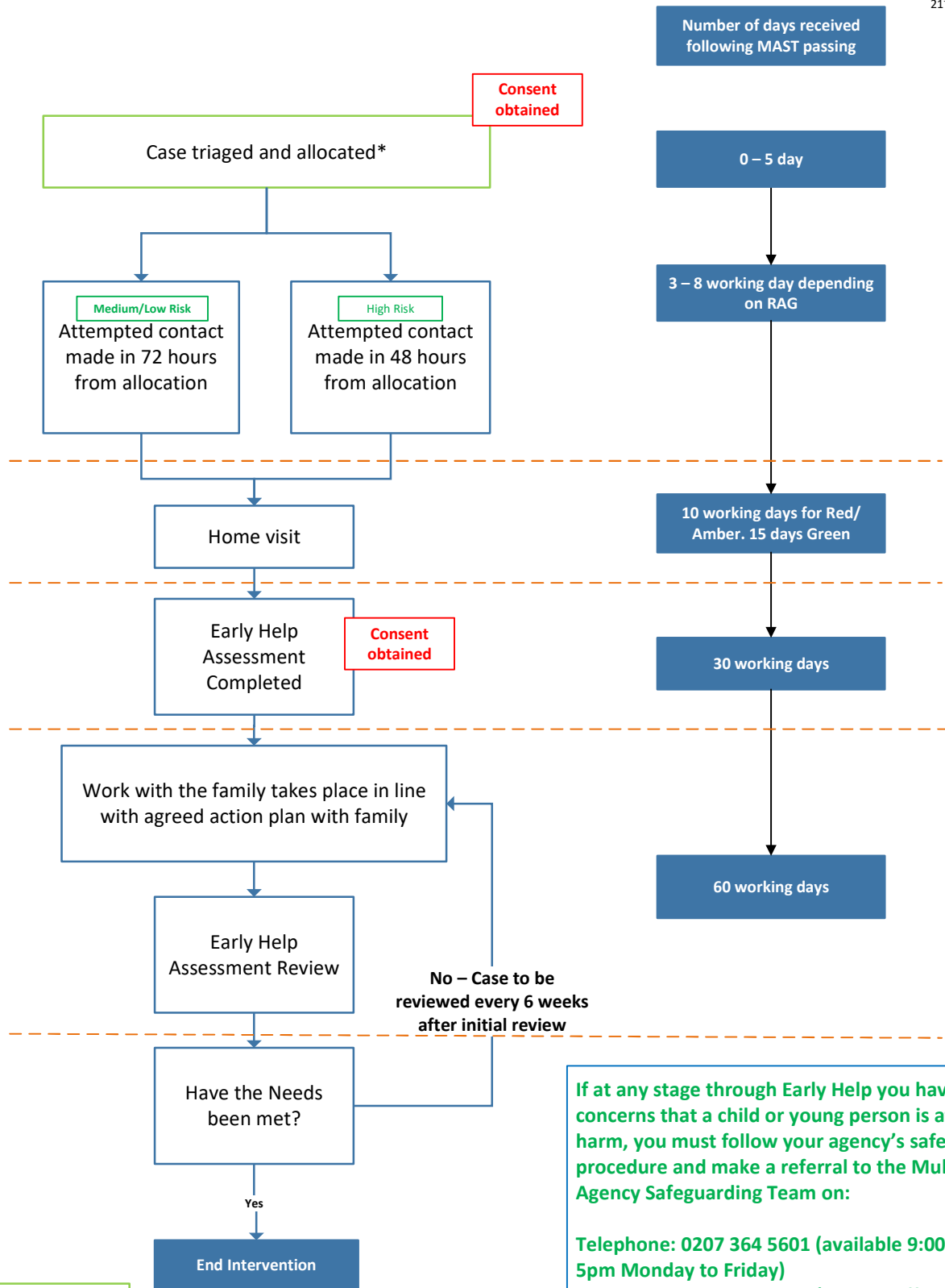


If you are concerned that a child is at risk you should contact the Tower Hamlets Multi Agency Safeguarding Team on 020 7364 5601



Early Help Timeline from Initial Early Help Enquiry

21st August 2023 V1.10



* Red case 3 days
Amber Case 4 days
Green Case 5 days

If at any stage through Early Help you have any concerns that a child or young person is at risk of harm, you must follow your agency's safeguarding procedure and make a referral to the Multi-Agency Safeguarding Team on:

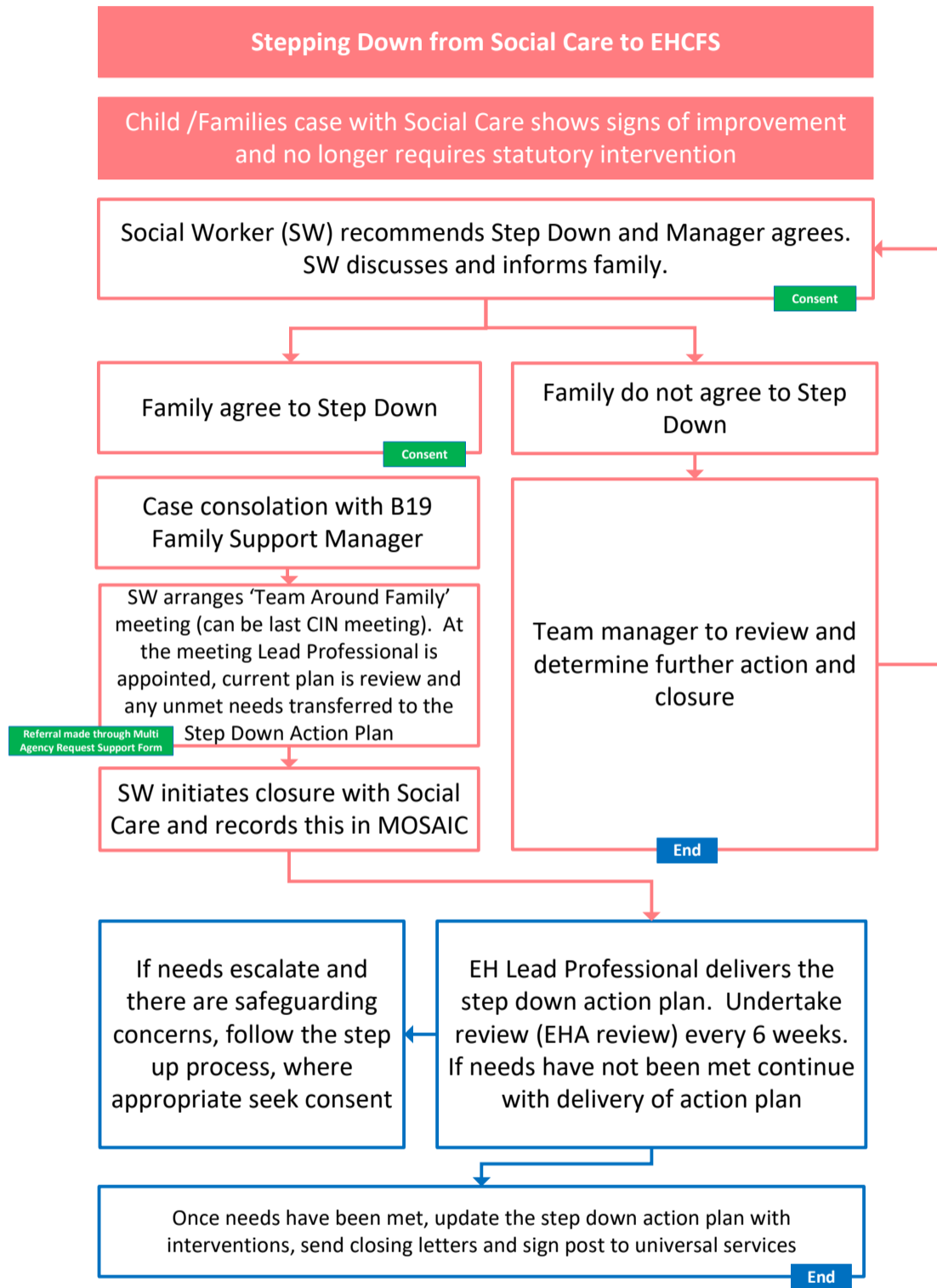
Telephone: 0207 364 5601 (available 9:00am – 5pm Monday to Friday)
Telephone: 0207 364 4079 (outside office hours)
Email: MAST@towerhamlets.gov.uk

Tower Hamlets Step Down Process

Early Help & Children and Family services (EH&CFS), and
Children's Social Care



Date: 21st August 2023 V1.10



If you are concerned that a child is at risk you should contact the Multi Agency Support Team on 020 7364 5601

