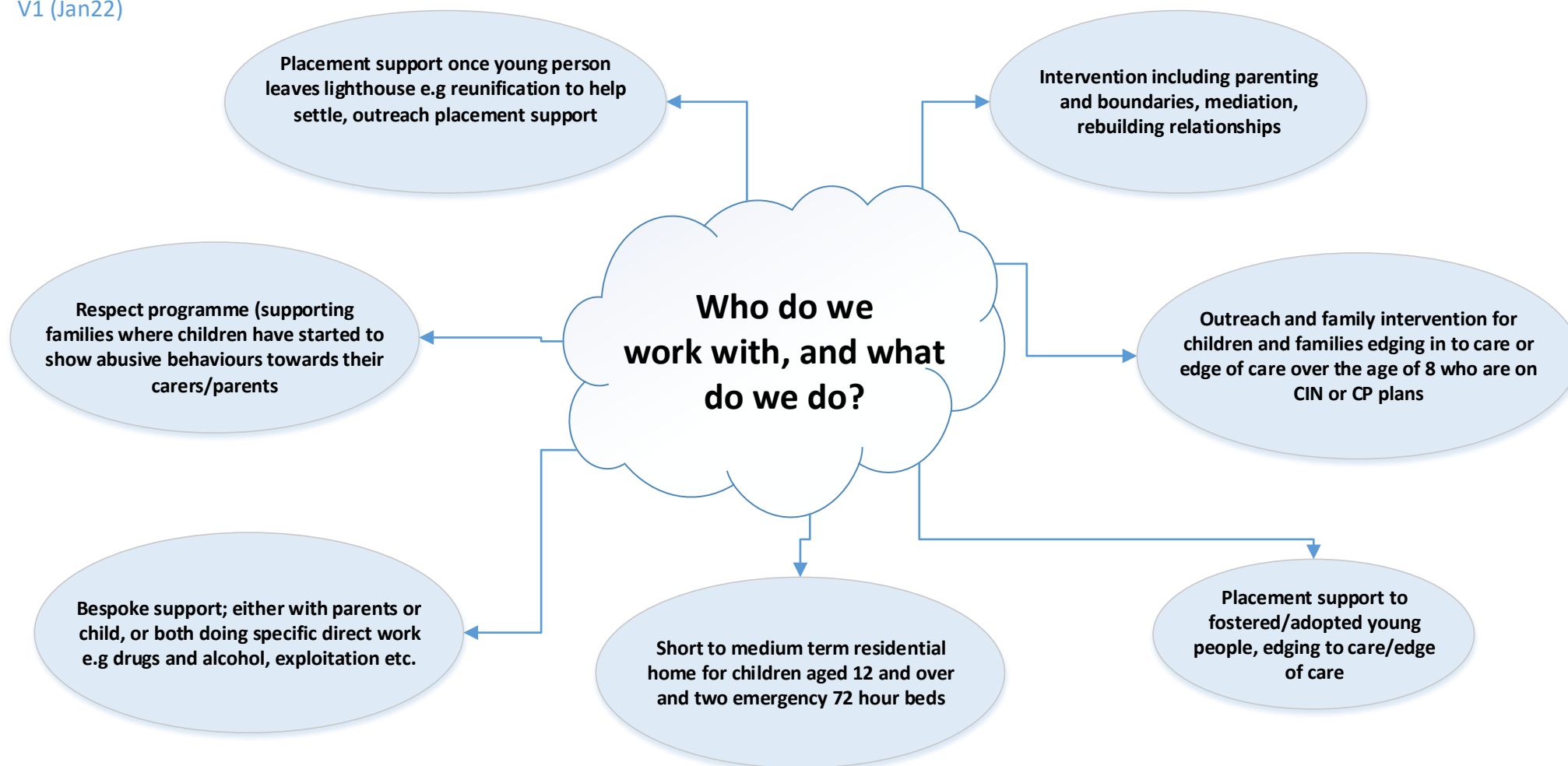


# Lighthouse/No Wrong Door Guidance

## The Difference Between No Wrong Door and The Lighthouse:

- No wrong door is a model that aims to reduce the number of children in care through supporting young people within or on the edge of care.
- The Lighthouse is a Hub where No Wrong Door is run from and is also a residential home for young people.

V1 (Jan22)



# Services That Support Young People in The Lighthouse



## Who We Are:

## How We Support Families:

**Life Coach / Clinical Psychologist**

- All young people have access to this psychological support if they have a lighthouse worker
- Foundations of attachment group for parents and carers
- Need to be allocated as a family
- Individual therapy for young people
- Group therapy

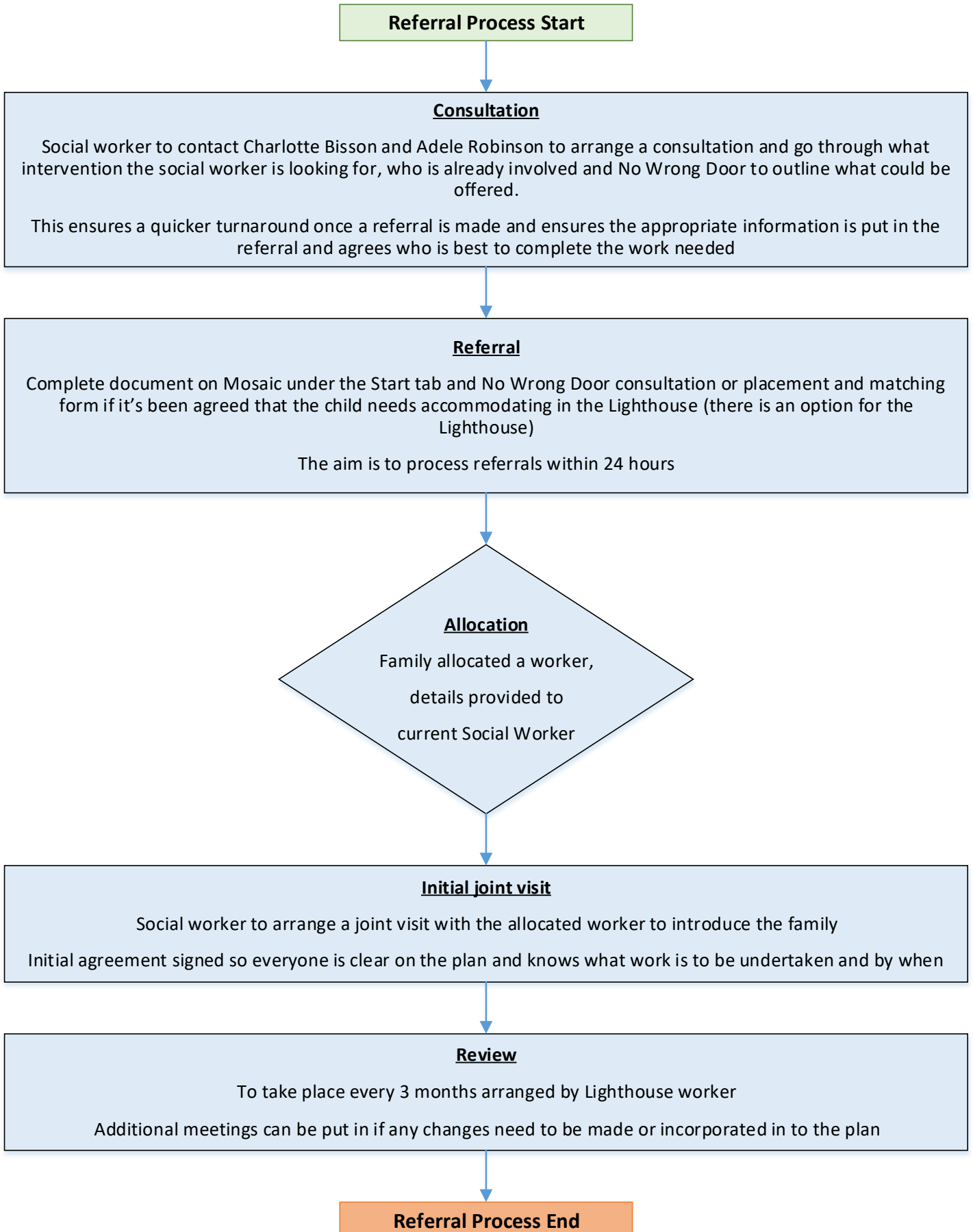
**Speech & Language Therapist**

- Work with allocated worker
- Complete assessments of young person's speech and language needs
- Support with strategies of communication with the family
- Link in with the young person's school

**The Police**

- Offer flexible support depending on needs of the young person
- Offer victim support when the young person is making allegations
- Support for offenders
- Support young people in the community including joint visits with the allocated worker when in the community

# Lighthouse Referral Process Flowchart



# Lighthouse/No Wrong Door Guidance FAQ's & Important Info.



V1 (Jan22)

Question	Response
<b>How do I know whether to refer to families first or No Wrong Door?</b>	No Wrong Door is for children over the age of 8 so if under 8, refer to families first. If unsure have a conversation with manager/families first/no wrong door. Joint consultations with families first and No wrong Door can be arranged if unsure – contact Charlotte Bisson and Danielle Howard if needed
<b>Do No Wrong Door offer respite?</b>	No

## Important Points To Note.....

- If a child comes in to the lighthouse they would become a Child In Care, even if just to access an emergency bed – it would be under either a section 20 or ICO (Interim Care Order); therefore, a placement and matching form would need to be completed and a delegated authority form
- There should be an exit plan; the Lighthouse is not a long term option
- Ring before making the referral for accommodation to check there is a bed available