

## Havering Adolescent Risk Management (HARM) Panel

### Terms of Reference

<b>Signed;</b>		<b>Date;</b>	June 2022	<b>Review Date;</b>	December 2022
	Amended invite list; minute template		Jan 23		

### Introduction

Safeguarding children who go missing, are at risk of exploitation or serious youth violence is a key priority for the Havering Safeguarding Children Partnership. The Adolescent Safeguarding Strategy Board is responsible for overseeing the partnership arrangements and coordinated action plan for safeguarding adolescents from harm and exploitation across the borough.

In 2021 a rapid review was undertaken into local arrangements for multi-agency meetings to safeguard children from exploitation, specifically children – up to 18, or to 25 where they have Special Educational Needs and Disabilities (SEND) - who go missing or who are exploited, and for adolescents – ages 10 to 18, or 25 where they have SEND who are at risk of exploitation.

The Havering Adolescent Risk Management (HARM) Panel has been introduced to consolidate several existing panels and to create one forum for oversight of children currently open to CSC that have either gone missing and/or are being exploited. These children will be identified in the IASS Single View dashboard as Top 8 children at risk in the preceding week. The HARM Panel will also be multi-agency prevention and early intervention network to discuss children at risk of exploitation not open to Children’s Social Care (CSC). These children will also be identified in the IASS Single View dashboard and will be the Top 5 children below those currently open in Assessment/CIN/CP/ CIC teams.

The panels that the HARM Panel will replace /incorporate include;

- The CSE Panel
- Pre-MACE
- Missing Panel
- The CCE Panel

Please note that HARM does not replace the requirement for Strategy or Risk Management meetings and information sharing across the Partnership.

### Purpose of the HARM Panel

The HARM Panel is to effectively develop a common understanding of the patterns and trends around all missing and child exploitation risks within Havering, enabling the partnership to ensure that resources are directed appropriately. At each meeting, the membership would scrutinise local responses to ensure that they are proportionate,

targeted, and providing effective outcomes for children and families. Specifically, the panel will identify particular children of concern and agree the lead agency/team and indicate the range of interventions/actions to be undertaken to improve the safety and outcomes for that child(ren).

The chair of each meeting will ensure that there is multiagency challenge, planning and effective actions are put in place, including monitoring arrangements, for all children at risk of being exploited and going missing in accordance with Havering Safeguarding Partnership procedures.

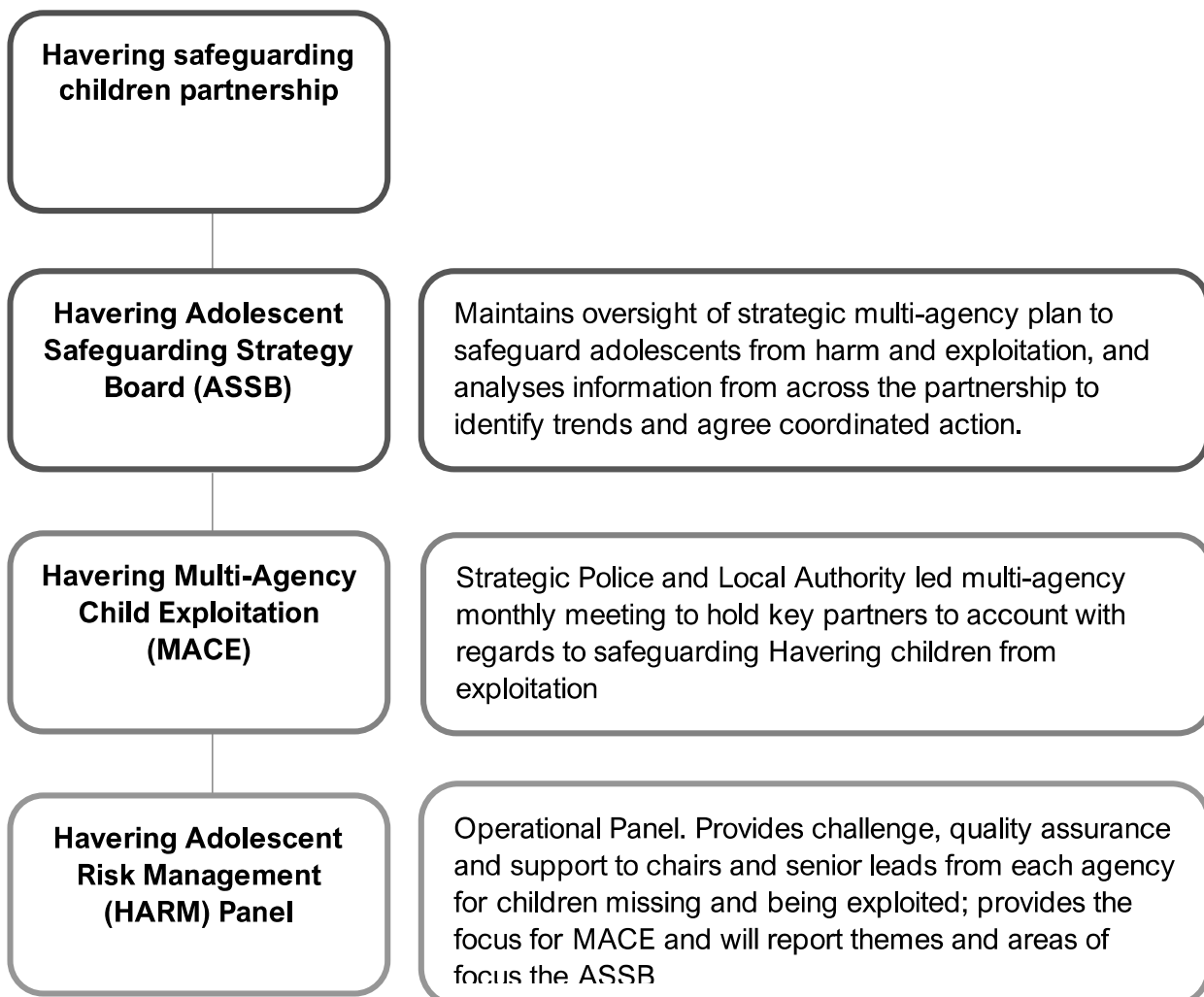
The Adolescent Safeguarding Strategy Board would remain responsible for maintaining a clear oversight on both the strategic and operational response to all children who go missing or who are exploited in Havering.

### **Role of HARM Panel**

1. Oversee operational decision making and response of all professionals working with missing children and/or children being exploited.
2. Scrutinise operational delivery for exploited children, ensuring that interventions are fit for purpose, sustainable, including the disruption of exploiters.
3. Cover (discuss) missing children and children at risk of any form of exploitation e.g. child sexual exploitation, child criminal exploitation, modern slavery and trafficking and their siblings where appropriate.
4. Have oversight to the risk assessments and interventions to reduce risks.
5. Ensure consistent multi-agency challenge in accordance with Havering Safeguarding Children Partnership procedures.
6. Assess risk for repeat and outstanding episodes for missing children and examine any links to child exploitation and/or links to Organised Crime Groups.
7. Inform the MACE meeting of themes, trends, locations and people of concern, resource issues that will inform a strategic overview, which will be reported to the Havering Adolescent Safeguarding Board.
8. Enable professionals who work with children ages 10-18, or 25 with SEND to identify vulnerabilities, and risks of exploitation and harm, and maximise preventative opportunities.
9. Coordinate partnership work to support vulnerable children ages 10-18, or 25 with SEND and their families and respond in a targeted, proportionate way to risks.
10. Where necessary agree and review actions to reduce risks and support to children and families
11. Identify underlying issues that may be making a child vulnerable to exploitation

12. Make best use of information sharing between partner agencies to establish a comprehensive picture of exploitation, and use problem solving to reduce exploitation and harm.
13. Focus partnership attention on areas that generate concern including child vulnerability factors, places and spaces of concern, emerging issues, patterns and trends, including those arising from local intelligence..
14. Identify additional support that can be offered to those at risk of exploitation and harm, including support from education, community, and voluntary sectors.
15. Develop and share best practice between professionals involved in working with children who are subject to harm, abuse, and exploitation

**Governance Arrangements:**



**Structure of Meetings**

Meetings will take place twice a month around planned MACE meetings. It will be on Tuesdays from 2.00 pm to 4.00pm. The structure of the meeting will be as follows;

### **First meeting after MACE**

2.00pm to 4.00pm: The Top 10 high Risk cases (cohort 1) identified on the Single View Dashboard, plus any highlighted cases that the Data Analyst identifies, that are open to CSC where concerns around exploitation are increasing.

- Update on current risks
- Agreement on new actions to safeguard child(ren) or step down
- Agreement on inclusion in MACE agenda

### **Meeting prior to MACE**

2.00 – 3.30pm: the Top 10 emerging cases (cohort 2) as identified by the Universal Dashboard plus any highlighted cases that the Data Analyst identifies, and any cohort 1 cases that need immediate review.

3.30 – 4.00pm; MACE agenda settings: any children that need to be added to MACE agenda, plus people of concern and places of concern, and any CAWNs that are outstanding, new Police reports.

Discussion at this meeting does not constitute a referral to statutory Children’s Social Care. These will continue and will be a conduit to the HARM Panel if agreed at that meeting.

### **Membership**

<b>Name</b>	<b>Role</b>	<b>Delegated Representative</b>
Steve Andrews	IASS Group Manager (Co-Chair)	SASS Team Manager
Ngozi Onwanibe	ISS Group Manager (Co-Chair)	ISS Group Manager
Farida Patel	Group Manager for MASH + Assessment	MASH and Assessment Team Manager
Teresa Milanzi-Papaya	Group Manager, Family Placement Service	Team Manager, Family Placement Service
Liz Dunnett	CAD 5-19 Support Team Manager	Social Care & Preparation for Adulthood Team Manager
Pippa Ward	CAHMS Lead	Breda Kavanagh
Jonathan Blyth	Data Analyst, Community Safety	Chris Stannett, Community Safety Officer
Ruth Smith	Data Analyst, IASS	N/A

Danielle Hemming	IASS Team Manager, Missing and Exploitation Lead	IASS Social Worker
Paul Archer	Safeguarding Lead, BHRUT	
Tony Cox	Exploitation Unit, Met Police	DC Kate Hurley
DS Rebekah Ellis	Misper Police	Danielle Euston (Havering Officer for Missing Panel and Philomena Protocol)
Jane Herbert	Team Manager Youth Support	Targeted Youth Manager
Julie Butcher	Specialist Nurse, Children Looked After	
Trina Dawkins	Assistant Head Havering Virtual School	Advisory Teacher, Havering Virtual School
Dave Holgate	Neighbourhood Officer, Met Police	
Sam Lucas	Team Leader – Wise Up Elm Park Children’s Centre	
Darren Alexander	AD Housing	

**HARM Panel Meeting prior to MACE only**

**Roles and Responsibilities of Members**

**Chair**

- The list of children to be discussed will be shared ahead of the next meeting to aid preparation
- Chair will ensure minutes are taken and disseminated to relevant professionals
- Chair will quality assure and monitor compliance of statutory guidance and safeguarding practice in the discharge for their role.
- Where there is a significant risk of harm raised, the Chair is accountable for ensuring that an appropriate member is tasked to take immediate action.
- Chair will review minutes and actions from the previous meeting at the start of each meeting to ensure appropriate actions/interventions have taken place.
- Chair will ensure that the group make timely decisions.
- Chair will ensure timely operational and tactical responses are put in place to ensure children and young people are safeguarded without delay
- Chair will ensure that all relevant children and young people have (where appropriate):

- A completed Risk and Vulnerability Assessment (HaRVA) and related action plan
  - Current CIN, CP or LAC planning
  - Escalation plans
  - Health care plan if applicable
  - YJ disposals if applicable
  - EHCP if applicable
  - Related professionals invited to attend the panel to present case updates and report on multiagency risk assessments and related action plans.
- Where there is a significant risk of harm raised during a HARM panel, the Chair is accountable for ensuring that an appropriate member is tasked to take immediate action.
  - Chair will ensure minutes are taken and disseminated to relevant professionals.

### **All Panel Members**

- Each member is responsible for sending a representative to all scheduled meetings if they are unable to attend.
- Each partner is responsible for the sharing of information across all members.
- Members are required to complete and report back on allocated actions as directed by the Chair in a timely manner, and by the next meeting so as not to compromise a child's welfare, safety or to delay an intervention plan.
- All participating agencies are responsible for reporting back to the meeting the activities and interventions undertaken in relation to managing exploitation.
- Members of the group will expect to be:
  - provided with information in a timely manner.
  - given reasonable time to make key decisions.
  - alerted to potential risks and issues that could impact the group, as they arise.
- Membership ensure a co-ordinated multi-agency approach is taken to safeguard children who have been identified as being at risk of exploitation.
- Members are required to share information held by their agency for children who meet the criteria for discussion.

- Members, under the guidance of the Chair, will review the available assessment information in relation to each child, including the objective scrutiny and analysis of local partnership responses and interventions.
- Each member is responsible for implementing their agreed actions and to report on the effectiveness and impact.