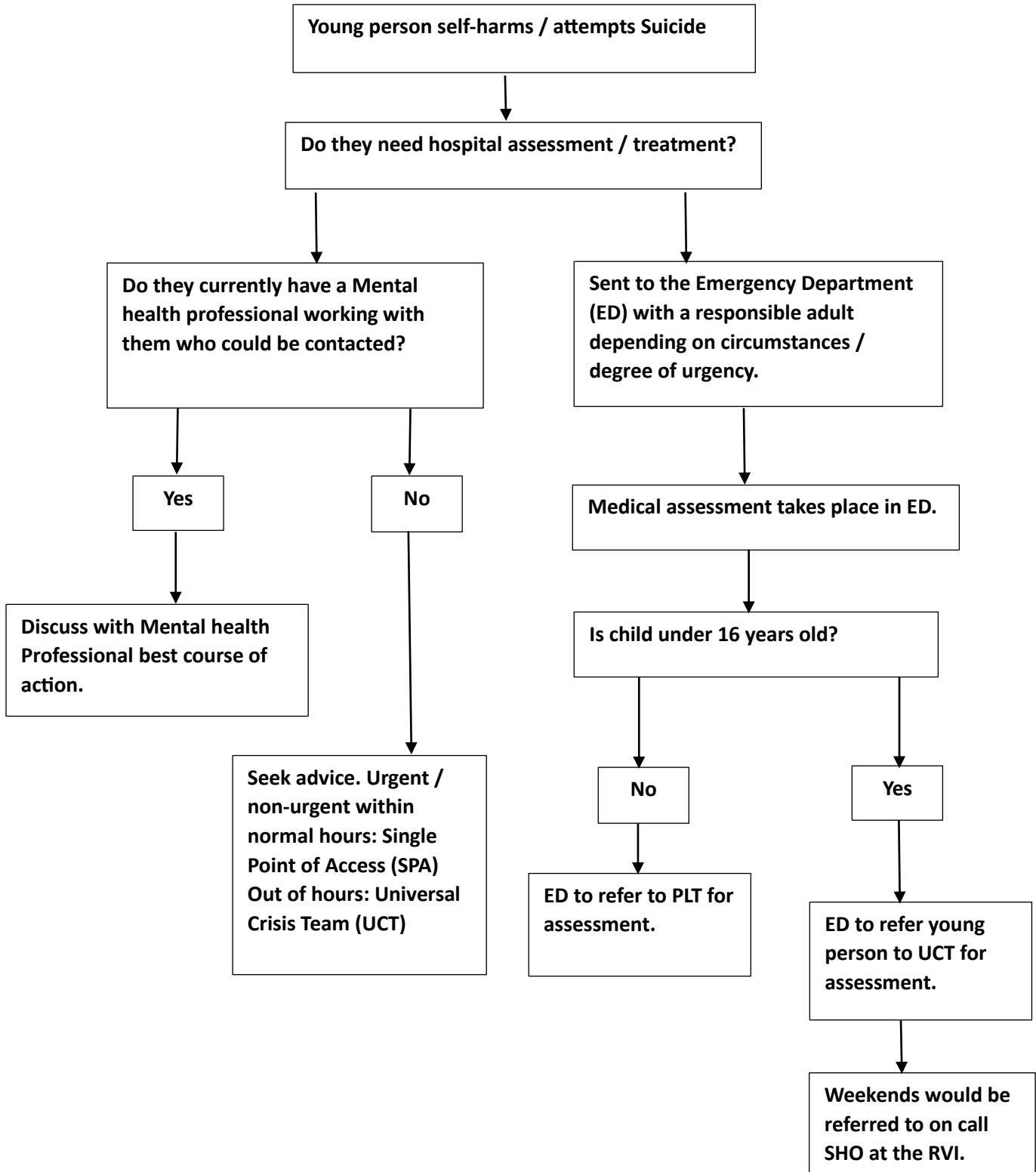


## Flow chart for Self Harm in young people under 18 years of age in Newcastle upon Tyne



**Note:** If child or young person self-discharges and their medical situation is life threatening, discuss with Consultant Paediatrician / Psychiatrist on call and involve Children’s Social Care and Police. If child or young person self-discharges before Mental health Assessment takes place, Mental Health Services will follow up in the community.

**Note:** All children and young people self-harming should have Trust “Cause for Concern” forms completed and sent to the Safeguarding Children’s Nursing Team. Some children may need a referral to Children’s Social Care. Also, the timing will depend on each individual case.