

Preparing for Adulthood Factsheet

What is Preparing for Adulthood?

This is the journey from childhood to adulthood.

When you reach 18, any services and support you are eligible to receive will be from Adult Social Care Services.



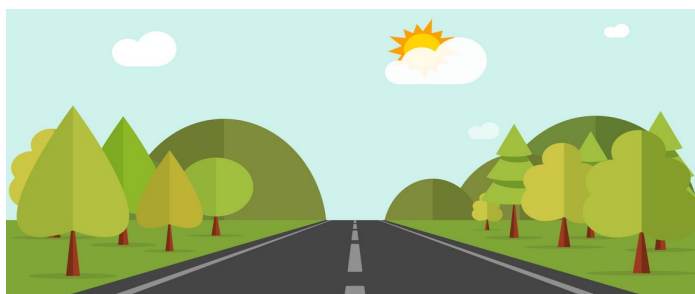
Bournemouth, Christchurch & Poole Preparing for Adulthood Team

The Preparing for Adulthood service is available to you when you need to consider what support you might require to meet your eligible care and support needs from Adult Social Care in the future.

The team have Social Care Workers who will help you to live a healthy and independent life, build friendships, and support you in education and employment.

We communicate in an open, honest and respectful way with you and your parents, carers and other professionals who work with you.

Your Journey with Us



At age 14

An eligibility screening tool will be completed at your school review.

At age 15

If you have care and support needs, a worker from the Preparing for Adulthood Team will contribute to your school review. We can provide information about types of help and support that might be available to you.

At age 16/17

A Preparing for Adulthood Team worker will meet with you and your current worker from Children's Social Care, if you have one, to talk about your options and future aspirations/plans.

Before the age of 18

A Preparing for Adulthood Team worker will write an assessment following the Care Act guidance. They will do this with you and your support network to ensure an holistic assessment, which focuses on your strengths.

An eligibility assessment will be completed with you by a Preparing for Adulthood Team worker.

A financial assessment will be completed with you by a worker from the Financial Assessment and Benefits Team.



What The Preparing for Adulthood Team Does

The Preparing for Adulthood worker can provide information and signposting about:

- Living Arrangements
- Health Services
- Further Education/Training/ Employment
- Careers Advice
- Paying for Care
- Legal Frameworks
- Direct Payments
- Access to Independent Advocacy for young people if required
- Support Services

Support for Carers

- The Preparing for Adulthood Team will work with you to write an assessment of your needs as a carer. We will agree a plan to identify support and services that will enable to continue in your caring role.
- We will offer you advice, support and signpost you to services that may assist you.
- We will support you in the journey of your child becoming an adult.
- We will work with you to develop a contingency plan in case of an emergency.

For more information please contact

Preparing for Adulthood Team (Bournemouth, Christchurch & Poole Council): 01202 451051
(Enquiries & Information) preparingforadulthoodteam@bcpcouncil.gov.uk

Care Direct (for age 18+): 01202 454979 (Bournemouth & Christchurch Referrals)
caredirect@bcpcouncil.gov.uk

Help Desk (for age 18+): 01202 631113 (Poole Referrals)
sshelpdesk@bcpcouncil.gov.uk

