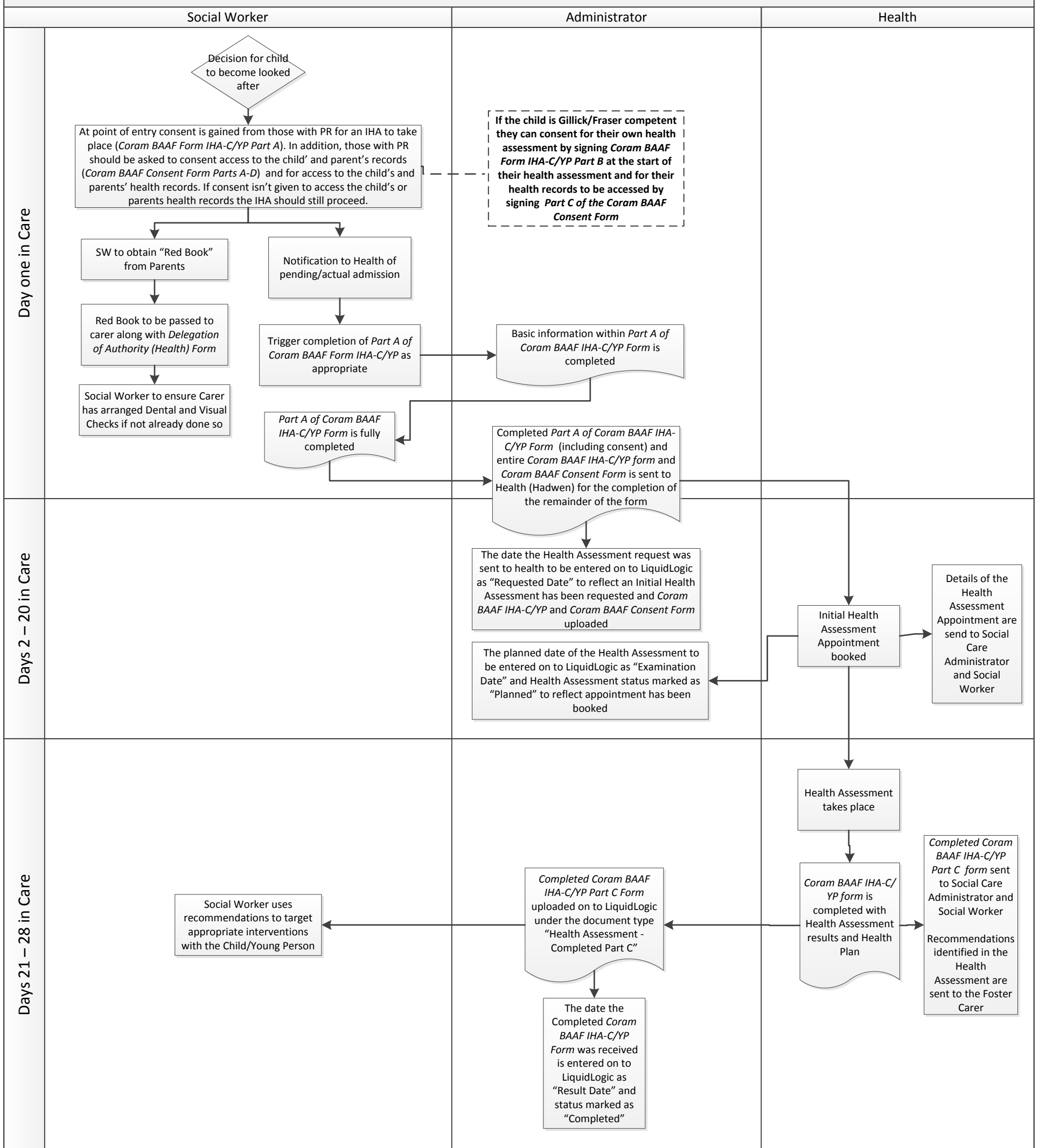


Children in Care - Initial Health Assessment Process



Links to relevant Forms:

[Coram BAAF Consent Forms GUIDANCE](#)

[Coram BAAF - Consent Form](#)

[Initial Health Assessment - Child](#)

[Initial Health Assessment - Young Person](#)

[Review Health Assessment - Child](#)

[Review Health Assessment - Young Person](#)