

What is extra care housing?

Extra care housing is self-contained accommodation for people aged 55 plus, with on-site care available 24 hours a day.

Extra care is designed for single people or couples who want to live at home, but need care or support. The care is flexible and can fit around your personal needs. It is ideal for people who have long-term deteriorating health conditions, people who need care at night and people whose needs can change quickly.

Extra care housing is not a care home; you have your own accommodation with your own front door. Although carers are on-site, they will only visit you if this is arranged in advance or you need them. The on-site care team will provide your personal care and they will be on hand at time of emergency day or night.

As this is your own home, you are responsible for household tasks like cooking, cleaning and laundry.

Extra care housing aims to provide a home for life. Sometimes this is not possible because of the need for specialist nursing care or high levels of supervision. If you need them, community nurses will visit you in extra care housing, as they would if you lived elsewhere in the community. If you need more specialist nursing care or supervision this may need to be provided in a care home.

Tenant associations arrange occasional social events which all tenants are welcome to participate in.

Community links are encouraged and the hairdressers and restaurants are available for local people to use.

What other facilities are there?

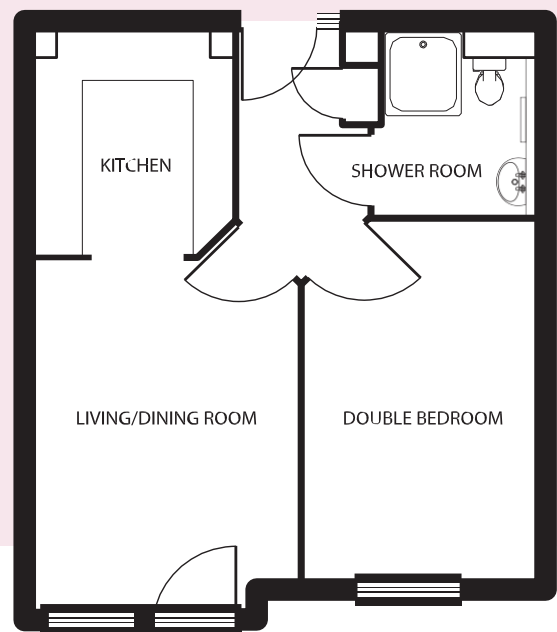
Schemes differ but most have an on-site hairdresser, launderette, computer room and guest facilities. You can enjoy a meal in the restaurant or chat with friends. Social events are arranged, you are welcome to join!

What can I expect in my home?

The schemes vary, but generally consist of either one or two bedrooms. In some schemes there are options for shared ownership. All homes will have an accessible bedroom(s), sitting room, separate kitchen area and walk in shower.

There are garden areas and communal lounges. Emergency call systems are available throughout to ensure help is always at hand. There is staff on duty at all times.

All parts of the building are wheelchair accessible and have buggy stores. Equipment, such as hoists or tele-technology, is easily added to the property.



An example flat layout

Where can I find extra care in Kent?

This is the restaurant at Regis Gate in Sittingbourne. It is managed by Amicus Horizon.



Other Extra Care Schemes:

Joseph Hadlum Court, Ashford
King Edward Court, Herne Bay
Bradstow Court, Broadstairs
Buckland Court, Dover
Emily Court, Dartford
Summer Court, Hythe
Regis Gate, Sittingbourne
Thomas Place, Maidstone
Tovil Green Court, Maidstone
Watling Court, Gravesend
Chamberlain Manor, Ashford
Caesar Court, Deal
White Oak Court, Swanley
Bowles Lodge, Hawkhurst



The above scheme is King Edward Court in Herne Bay.

Do I qualify for extra care housing?

You must be aged 55 years or older and be assessed by adult social services as qualifying for help with social care from KCC and need the level of support provided in extra care. You must also be registered on the district council's housing list.

If you are not already receiving help from Adult Social Care and would like to be assessed, contact the KCC Contact Centre on (03000 416161).

How do I apply?

We suggest that your first step is to find out more about our extra care housing schemes by making an informal arrangement to visit them. You should also contact KCC's Adult Social Care to find out whether you are eligible for help and whether extra care housing will be able to meet your care and support needs. We will advise you on how to apply.

What will it cost?

You will be responsible for the rent, service charge, utilities, meals and council tax. You may be entitled to benefits to help with these payments. KCC will need you to have a financial assessment to see how much you should contribute to your care costs and the cost of the 24 hour background support (known as the Wellbeing Charge – see fact sheet 2).

If you have questions about this fact sheet, or if you need it in a different format (e.g. large print) phone (03000 418345) or email

accommodationsolutions@kent.gov.uk

For more information about local services visit our website

www.kent.gov.uk

The lounge area at Regis Gate, Sittingbourne.

