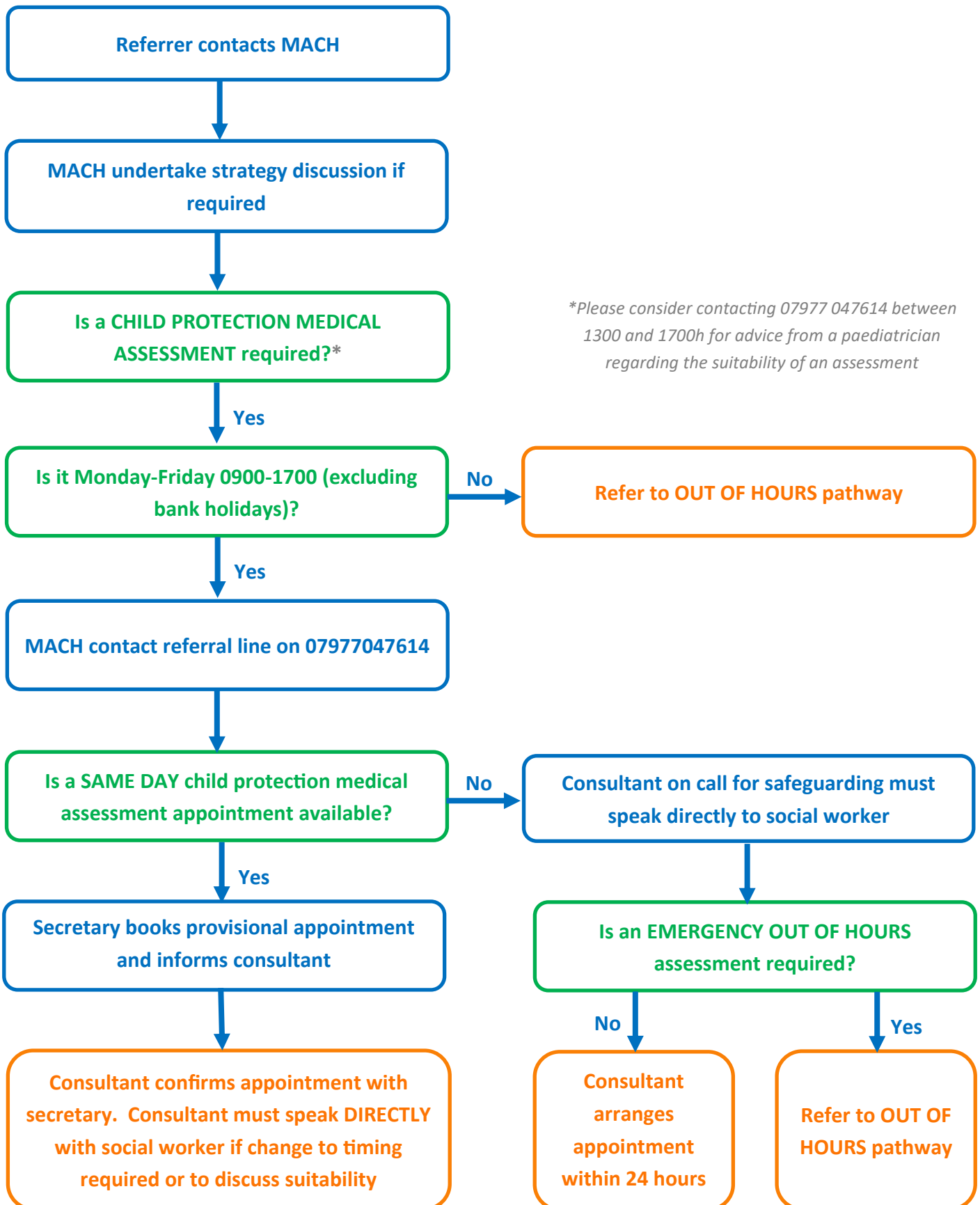


# South Tees Child Protection Medical Assessment Referral Pathway: NORMAL WORKING HOURS

*This pathway should be used to book a child protection medical assessment for children under the age of 18 years within the Middlesbrough and Redcar and Cleveland Local Authority areas in normal working hours (Monday to Friday 0900-1700, excluding bank holidays)*



*\*Please consider contacting 07977 047614 between 1300 and 1700h for advice from a paediatrician regarding the suitability of an assessment*

*Please note: Discussions with consultants may not be possible until 1300-1700h.*