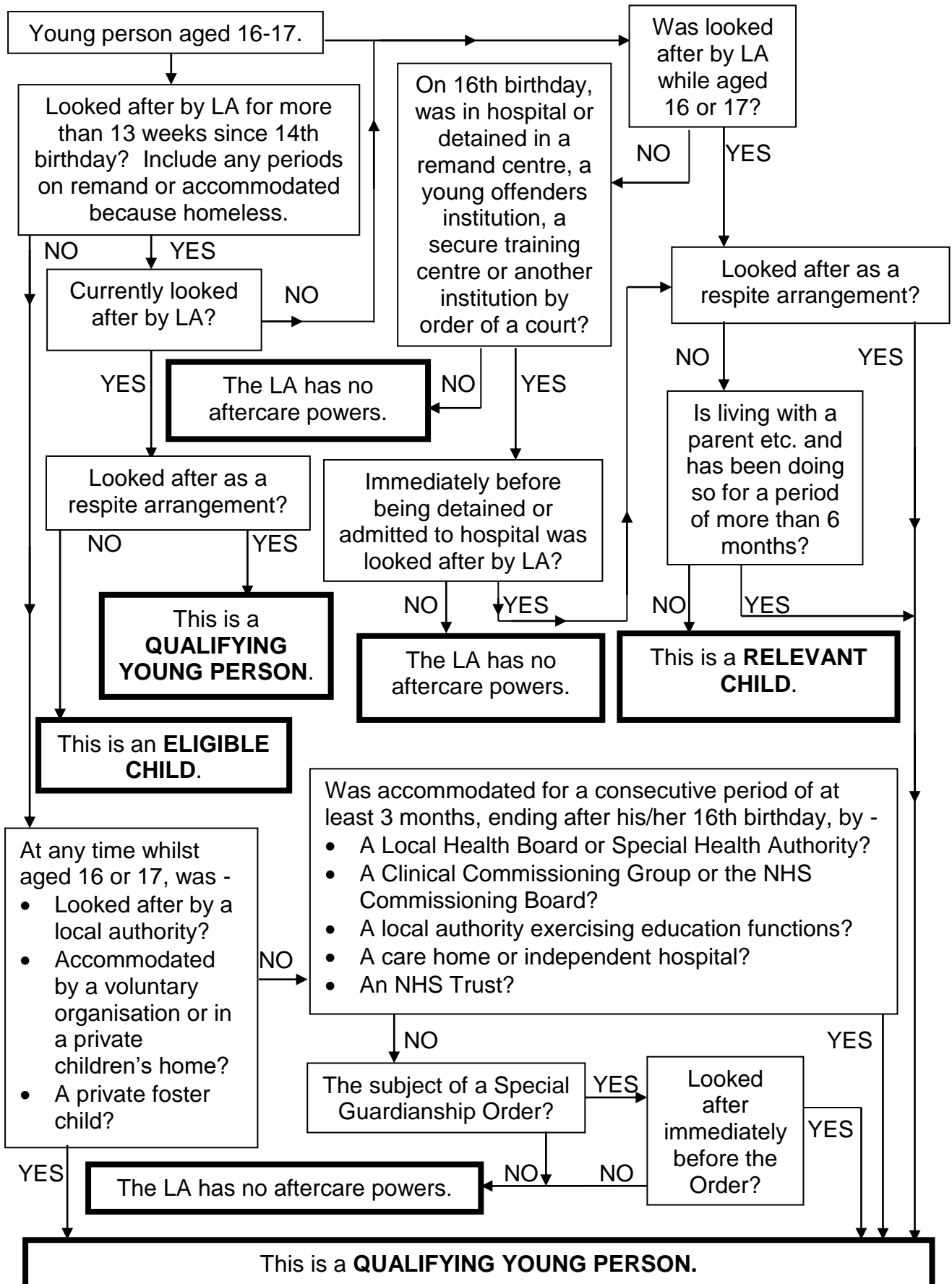




YOUNG PERSON AGED 16 - 17 WHO MAY BE AN ELIGIBLE CHILD, A RELEVANT CHILD OR A QUALIFYING YOUNG PERSON





PERSON AGED 18 - 24 WHO MAY BE A FORMER RELEVANT CHILD OR A QUALIFYING YOUNG PERSON

