



# Luton

## Multi-Agency Safeguarding Arrangements

## Name of Arrangements

Luton Safeguarding Children Board

Details of how partners will work together to improve the outcomes for children, young people and their families is contained within **Appendix A** - Terms of Reference.

## Details of Arrangements

The arrangements cover the geographical area of Luton Borough Council.

The Luton Multi-Agency Safeguarding arrangements consist of a Luton Safeguarding Children's Board (which includes membership from the three safeguarding partners, all schools, colleges and other educational establishments); a Luton Safeguarding executive group; a Luton only SAR / Child Practice Safeguarding Review Group and a joint Board Learning Improvement group followed by a set of sub-groups, which span across Bedfordshire and cover the areas of Central Bedfordshire, Bedford and Luton.

The arrangements consist of:

- An independently chaired Safeguarding Children Board <sup>1</sup> for Luton
- A Luton Joint SAR/Child Safeguarding Practice Review Group
- A Luton Joint Executive Safeguarding Group
- A Pan Bedfordshire Co-ordinating Group (Group overseeing work of the Pan Bedfordshire sub-groups)
- A Pan Bedfordshire Children's Strategic Leaders Group (Pan Bedfordshire strategic direction, leadership and accountability)
- A Pan Bedfordshire Domestic Abuse Children's Strategic Leaders Group

A set of Core Groups which are the standing sub-groups of the Safeguarding Board arrangements:

- A Pan Bedfordshire Policies and Procedure Group
- A Pan Bedfordshire Voice of the Child Group
- A Pan Bedfordshire Learning and improvement and Training Group

A set of sub-groups which relate to the priority areas of the Strategic Boards – these may change over time if the priorities change, these groups are:

- A Pan Bedfordshire Neglect Group
- A Pan Bedfordshire Strategic Child Exploitation and Missing Group

There is currently two other thematic meetings which take also place:

- A Pan Bedfordshire Harmful Practices Meeting
- A Pan Bedfordshire Digital Safeguarding Group

A structure chart is shown on page 12 :

---

<sup>11</sup> The partners have agreed to stay with the use of the name LSCB, as this has been well established and understood by the CVS sector as well as partner agencies in terms of remit and focus.

## **Guiding principles**

The partnership will be driven by:

Strong, effective multi-agency safeguarding arrangements do not just happen. They demand an active commitment to collaboration and common purpose.

Effective protection of children and the promotion of their well-being can only be secured through working together.

Safeguarding arrangements for children and young people being built, sustained, tested and continuously improved.

Safeguard the rights of vulnerable children consistently across the county but not losing the focus on needs of Luton Borough children and young people.

- All partners keep the child in focus when making decisions about their lives and work in partnership with them and their families.
- All partners to champion a continuous cycle of learning, to further develop service provision and delivery to support the child and their family
- Duty to co-operate on ALL partners, including all schools, colleges and other educational providers.
- Independent challenge, authority and resource to fulfil both required statutory functions and ensure learning

That any change is not led by austerity or cuts but by measurable improvements in the safeguarding systems that benefit children, young people and their families

## **Geographical Area covered by arrangements**

Luton

### **Local Safeguarding Partners**

- Luton Borough Council
- Luton Clinical Commissioning Group
- Bedfordshire Police

### **Relevant Agencies**

- Independent Chair
- CAFCASS (Children and Family Courts Advisory and Support Service)
- Luton Council including Housing, Children's Services and Public Health
- Luton Youth Offending Service
- Bedfordshire Police
- BeNCH (probation)

- National Probation Service
- All Schools , colleges and other education providers
- 16+ providers
- Alternative Learning providers
- Representatives of Early Years providers
- Luton Clinical Commissioning Group
- East London Foundation Trust
- Cambridge Community Services
- Luton and Dunstable NHS Foundation Hospital
- Representatives from Voluntary and community sectors
- Three lay members

The above relevant partners have been selected as they currently form part of the existing multi-agency safeguarding arrangements in Luton. The existing arrangements are working well with all partners committed to the safeguarding of children in Luton and across the wider county (Bedfordshire).

Details of how partners will work together to improve the outcomes for children and families is contained within Appendix A (*Terms of Reference*)

### **Links to Early Years and Education Settings**

The partners recognise the important of ensuring early years providers and education settings are part of the arrangements.

Currently there are five head teachers on the partnership who were nominated by their peers to represent schools on the Board. There is also representation from the Sixth Form college and the local Further Education college. Within the multi-agency safeguarding arrangements there are also several education representatives either from the Luton Council's School Improvement Team or from education settings on the sub groups of the partnership.

Representation from the Early Years is through two routes - representation from LBC Early Years team and also through the Flying Start projects.

Currently

- Luton SAR Practice Learning Review Group – School Improvement Team representative
- Pan Bedfordshire Co-ordinating Group – College representative
- Pan Bedfordshire Voice of the Child Group – College Representative chairs the meeting with attendance from primary, secondary and special schools' representatives
- Pan Bedfordshire Digital Safeguarding Group – Schools PSHE curriculum lead
- Pan Bedfordshire Learning and Improvement and Training Group – Schools and School Improvement Team representatives.

Local schools and colleges are also invited to take part in audits and case reviews where they are relevant. They are also involved in the Section 175 audits and section 11 arrangements.

Safeguarding information is shared via the DSO

The Safeguarding Children Board also communicates with schools via the Schools Education Service newsletter.

### **Links to Youth Custody and Residential Homes**

There are no Youth Custody establishments located in Luton (or Bedfordshire).

In relation to residential Homes, the Service Director for Children's Social Care who is responsible for the Corporate Parenting/Looked After Children's Service, is a member of the Luton Multi-Agency Safeguarding Arrangements.

### **Governance & Scrutiny Arrangements**

The Governance for the Multi-Agency Safeguarding Arrangements sits with the Pan Bedfordshire Chief Executive Group and overseen via the three safeguarding partner's internal structures;

- Local Authority - Executive Committee
- Luton Clinical Commissioning Group – Board
- Bedfordshire Police – PEEL Board

### **Arrangements for Independent Scrutiny**

The Luton Safeguarding Children Board is chaired by an Independent Chairperson who is responsible for scrutinising and challenging local partners. The Chair of the Multi-Agency Safeguarding Arrangements in Luton is an independent appointment confirmed by the Chief Officers for the three local safeguarding partners (Luton Borough Council, Bedfordshire Police and Bedfordshire, Luton and Milton Keynes Clinical Commissioning Group) to whom the arrangements are accountable.

The Independent Chair is responsible for scrutinising how effectively the safeguarding arrangements are working for children, families and practitioners, and how well the safeguarding partners are providing strong leadership. The role is objective and acts as a critical friend, promotes reflection and drives continuous improvement.

The Luton SAR/Child Safeguarding Practice Review Group which is responsible for taking forward local Child Safeguarding Practice Reviews is also independently chaired.

The Board currently has three lay members, their role is not only to act as an ambassadors and assist in building stronger ties with the local community but it is

also to scrutinise and challenge practice. A key focus of that role is to ensure accessibility by the public, children and young people of the Board's plans and procedures.

The Pan Bedfordshire Co-ordinating Group which is responsible for overseeing the work of the Pan Bedfordshire Sub-Groups, is chaired by one of the three Bedfordshire Strategic Board Independent Chairs rotated on an annual basis.

Arrangements for this post are compliant with Working Together 2018.

### **Funding Arrangements – updated October 2021**

<b>Provider</b>	<b>Approx %</b>	<b>Funding</b>
LBC	57%	£147,850
NHS Luton CCG	8%	£21,767
L&D University Hospital	8%	£21,767
East London Health Foundation	8%	£21,767
Cambridge Community Services	8%	£21,767
National Probation Services	<1%	£1600
Police & Crime Commissioner	9%	£24,359
<b>Total Contribution</b>		<b>£260877</b>

### **Reporting**

In order to bring about transparency, the Luton Multi-Agency Safeguarding Arrangements will publish a report at least every 12 months which sets out what has been done as a result of the arrangements, and will include information on child safeguarding practice reviews.

The report will also include:

- Evidence of the impact the Multi-Agency Safeguarding Arrangements have had including information about training and the outcomes for children and families from early help to looked after children and care leavers.
- An analysis of any areas where there has been little or no evidence of progress on agreed priorities.
- A record of decisions and actions taken by the partners in the report's period (or planned to be taken) to implement the recommendations of any local and national child safeguarding practice reviews, including any resulting improvements.
- Ways in which partners have sought and utilised the feedback from children and families to inform their work and influence service provision.

The report will be published on the Safeguarding Board's website and a copy will also be sent to the National child Safeguarding Practice Review Panel and the What Works Centre for Children's Social Care within seven working days of being published.

### **Arrangements for disseminating and embedding Learning from Child Safeguarding Practice Reviews and Multi-Agency Audits**

The Luton Multi-Agency Safeguarding Arrangements has in place a Learning and Improvement Framework to help set out a process for continuously improving practice via the learning loop. (The continuous learning loop is shown below).

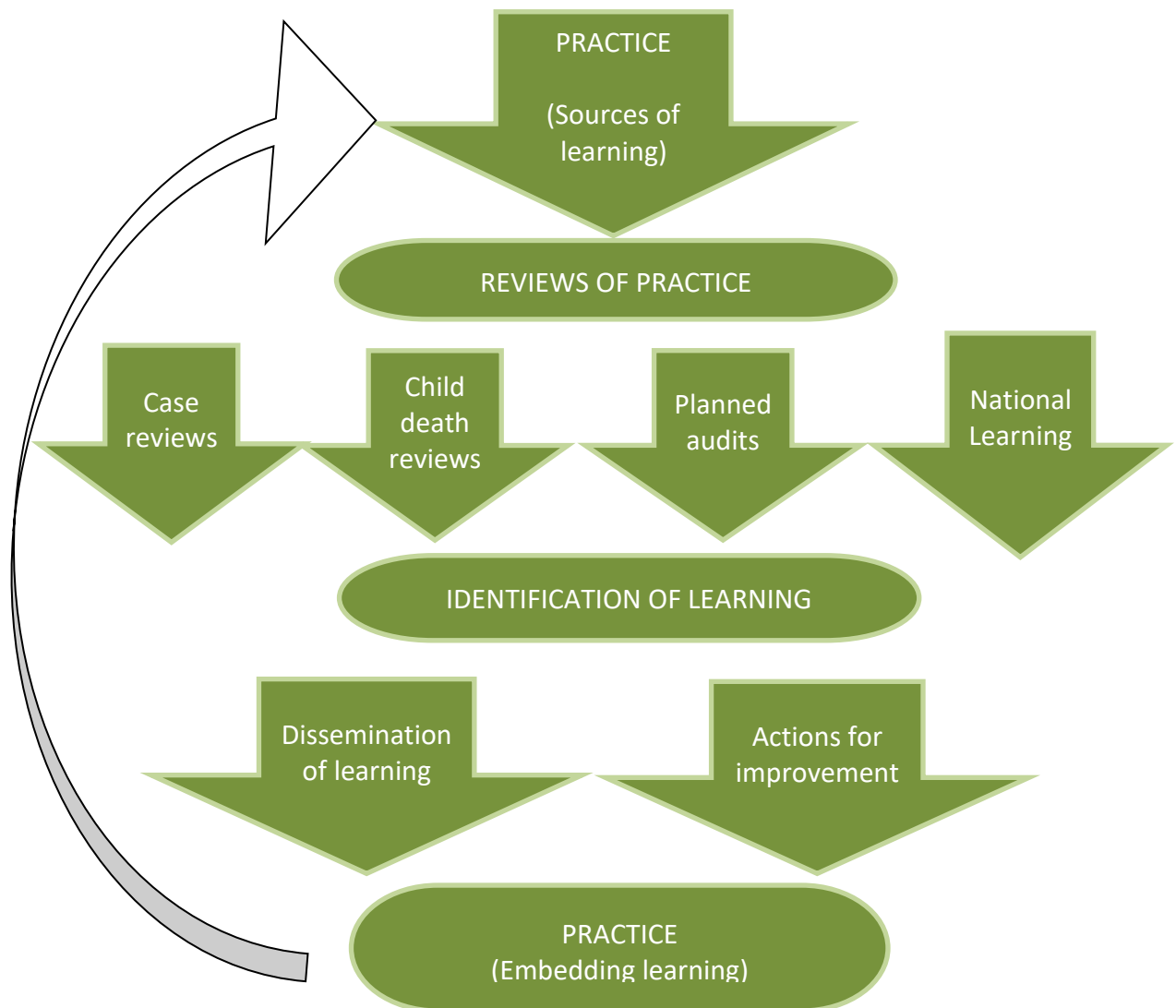
The Multi-Agency Safeguarding Arrangements include a Pan Bedfordshire Learning and Improvement and training group which is responsible for following activities related to multi-agency audits:

- Delivering the Learning and Improvement Framework
- Developing and agreeing an annual programme of multi-agency audits
- Reviewing safeguarding related audits completed by single agencies
- Ensuring learning from Case Reviews and audits are fed in to training and policies and procedures
- Ensuring actions from multi-agency audits are implemented and where possible outcomes are measured.
- Sharing up to date knowledge of relevant research findings.

Learning from the activities (case reviews and audits) are disseminated using a range of methods including:

- Briefings and Conferences
- Multi-Agency Training Programme
- Newsletters and briefing documents
- Via the website
- Published Case Reviews
- Single agency training and briefings

## Continuous Learning Loop



## Luton Learning Improvement Framework

<https://lutonlscb.org.uk/wp-content/uploads/2018/04/3-Learning-Improvement-Framework-Draft-may-17.pdf>

## Performance Monitoring Arrangements

The Luton Safeguarding Arrangements have in place a multi-agency performance framework which is monitored and scrutinised by the Board, which will a) commission specific performance data related to priorities and b) consider issues of performance on safeguarding raised by the MASH sub group. In addition, performance indicators linked to themes/priority issues are also developed by the priority area sub-groups for discussion and scrutiny within the individual sub-groups.



## **Arrangements for Commissioning Child Safeguarding Practice Reviews**

**Appendix B** provides details of the Luton process for receiving serious incident notifications and considering and commissioning Child Safeguarding Practice Reviews.

## **Arrangements for Inter-Agency Training**

Multi-agency training across Bedfordshire is organised and commissioned via a Pan Bedfordshire Training Unit funded by the three Local Area Multi-Agency Safeguarding Arrangements.

A Pan Bedfordshire Training and Development Group are primarily responsible for;

- processes in place to identify the multi-agency training and development needs of staff and volunteers in Bedfordshire.
- building on the current joint training and development strategy
- ensuring that the content of the LSCB training programme is based on latest research/clinical evidence about 'what works' when working with children, young people and families.
- ensuring lessons from SCRs, other reviews and audits are disseminated with a view to embed into practice
- overseeing the commission arrangements and ensure relevant and competent trainers are utilised with a broader range of skills
- monitoring and evaluating the quality and impact of training on practice and take appropriate & timely action

## **Training**

The Pan Bedfordshire LSCB training unit offers an extensive range of safeguarding training to people working with children, young people and their families. The programme focuses on the multi-agency challenges of working together.

There is an expectation that individual partners will provide relevant single agency training and induction in order to support their staff have an understanding of relevant practice and policy, and are able to manage safeguarding in an appropriate manner.

The Pan Bedfordshire LSCB training offer focuses on enabling practitioners to develop/enhance the inter-personal, communication and partnership working skills. In addition, the unit will commission events, e.g. learning as well as face to face on specific specialist issues such as Harmful Practices.

External expertise is commissioned where required to ensure the quality of learning/training. Expertise from across Bedfordshire services is also drawn upon where available to support the learning/training programme.

## **Evaluation and Impact of training on practice**

The unit has a robust approach to evaluating the learning/training delivered through the Pan Bedfordshire Training Unit, measuring both the quality of the training delivered and to evidence the impact on practice. Training is evaluated on:

- The quality of the learning/training (has it met participants' learning needs and course objectives?)
- The immediate impact of the learning/training (has the learning/training had an impact on the participants' knowledge and confidence levels?)
- What difference are we making? - the longer-term impact of the training (has the learning/training had an impact on participants' practice and specific outcomes for children and young people?)

The Pan Bedfordshire Training Unit provides a quarterly training report for each Safeguarding Arrangement. This report supports the Pan Bedfordshire Learning and Improvement and Training Group in developing their quarterly reports to the three Bedfordshire Safeguarding Arrangements.

## **Voice of Children and Families**

As part of the Luton Safeguarding Arrangements there is a Pan Beds Voice of the Child Sub-Group which is responsible for reviewing how local partners are hearing the voice of children and their families and how they are acting upon this. The group also carries out work directly with young people either through surveys or workshops to gain their views about the safeguarding services they receive. The group also carries out consultation activities usually in the form of focus groups with practitioners working with young people to gain their views on how systems and processes are working, and their views on the services and support opportunities that are provided to young people and their families.

In addition to the above:

- All Board reports are asked to consider the voice of the child
- All audits consider the voice of the child(ren) and families
- Families are always contacted to participate in local case reviews

## **Links to local Threshold Guidance**

Luton has in place multi-agency guidance related to the thresholds of needs for children and young people.

<http://lutonlscb.org.uk/wp-content/uploads/2021/10/Effective-Support-for-Children-and-Young-People-in-Luton-Oct-2021-1.pdf>

This guidance is designed for anyone working with children and young people and their families:

- To show the criteria for access to services for children based on a multi-agency needs/risk matrix
- To outline the four levels of prevention, need and risk, including safeguarding thresholds
- To set out the key principles for service provision to children, young people and families
- To know what action to take if they are worried about a child's welfare or safety
- To understand what will happen if a child is referred to children's social care
- To outline the threshold between Early Help and Children's Social Care, although in some circumstances both services will be involved.

## **Child Death Review processes (CDOP)**

As per Working Together 2018, our child death review partners are Bedford Borough Council, Central Bedfordshire Council, Luton Borough Council, Luton, Bedfordshire and Milton Keynes Clinical Commissioning group. The statutory requirements and responsibilities for child death review partners are set out in Working Together 2018 (page 95 -97).

Bedfordshire and Luton CDOP will produce an annual report for child death review partners on local patterns and trends in child deaths, any lessons learnt and actions taken, and the effectiveness of the wider child death review process in order to assist child death review partners to prepare their report.

Bedfordshire and Luton CDOP in liaison with Milton Keynes CDOP will consider when writing their annual reports whether there are any common themes and learning from the year to undertake joint communication campaigns across Bedfordshire, Luton and Milton Keynes. This will reflect a wider footprint and the Integrated Care System (ICS) across Bedfordshire Luton and Milton Keynes (BLMK) which includes the BLMK Commissioning Collaborative.

## **Professional Practice Guidance**

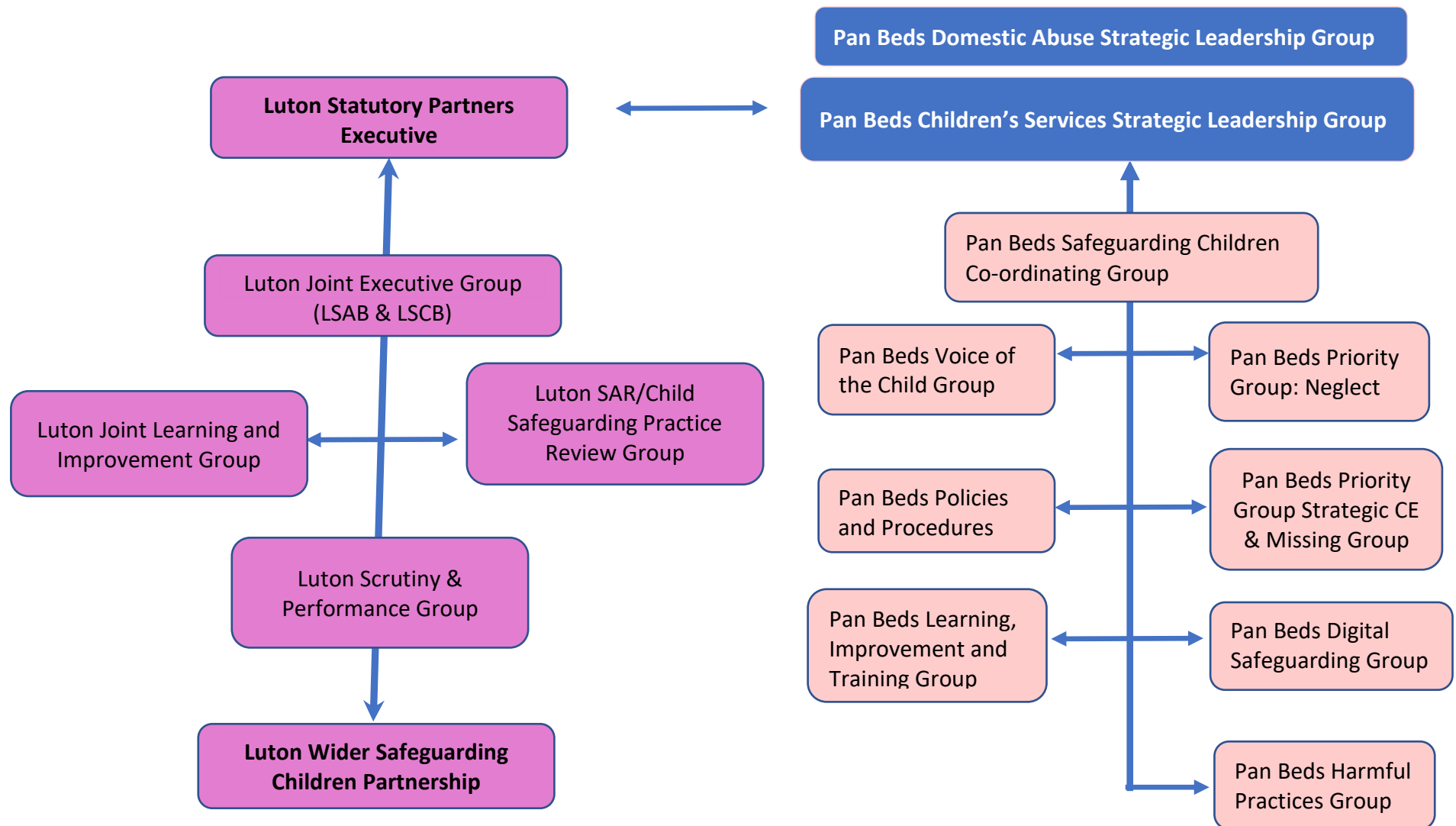
All partners will continue to follow the existing Pan Bedfordshire Inter-Agency Procedures. This will underpin expected standardised process & practice across Bedfordshire. Adoption of these procedures will provide consistency to practitioners who are already familiar with these procedures. <http://bedfordscb.proceduresonline.com>

These procedures will be refreshed in accordance with legislative and statutory guidance changes and national & local learning. This will be progressed through the work of the Pan Bedfordshire Policies & Procedures sub group.

## **Dispute resolution:**

Safeguarding partners will work together locally to resolve any disputes. To aid any disputes the Pan Bedfordshire Escalation Procedures have been amended to reflect these new arrangements. Any unresolved disputes will be referred by the safeguarding partners to the Statutory Partnership Chairs and Safeguarding Assurance Meeting.

## Luton arrangements and relationships with Pan Beds Sub Groups - Structure Updated October 2021



## Signatures

**Signature of Local Authority Chief Executive**

**(Robin Porter – Chief Executive, Luton Borough Council)**

**Signature of the accountable officer for Luton Clinical Commissioning Group**



**(Chief Executive, Luton CCG)**

**Signature of the Chief Constable**



**(Jon Boutcher – Chief Constable, Bedfordshire Constabulary)**

**Date: May 30<sup>th</sup> 2019**

## **Terms of Reference**

### **Luton Multi-Agency Safeguarding Arrangements determined by the Children and Social Work Act 2017 and Working Together to Safeguard Children 2018**

#### **Introduction**

Chapter 2, Section 16 of the Children and Social Work Act 2017 requires the safeguarding partners for a local authority area in England and Wales to make arrangements for safeguarding and promoting the welfare of children.

#### **Safeguarding partners**

A safeguarding partner in relation to a local authority area in England is defined under the Children Act 2004 (as amended by the Children and Social Work Act, 2017) as:

- a) The local authority (Luton Borough Council)
- b) A clinical commissioning group for an area any part of which falls within the local authority area (Luton Clinical Commissioning Group)
- c) The chief officer of police for an area any part of which falls within the local authority area (Bedfordshire Police)

#### **Geographical area**

The geographical footprint for the arrangements is based on local authority areas. However, the safeguarding partners for two or more local authority areas may choose to be treated as a single area in relation to the Multi-Agency Safeguarding Arrangements.

The Multi-Agency Safeguarding Arrangements for Luton Borough cover the local authority area of Luton Borough.

#### **Statutory and Legislative Duties**

The safeguarding partners for a local authority area in England (listed above) must make arrangements for:

- a) The safeguarding partners, and
- b) Any relevant agencies that they consider appropriate

To work together for the purpose of safeguarding and promoting the welfare of children, and identifying and responding to the needs of children in the area.

The arrangements must also include a process for identifying and conducting Local Child Safeguarding Practice Reviews:

- a) To identify serious child safeguarding cases which raise issues of importance in relation to the area, and
- b) For those cases to be reviewed under the supervision of the safeguarding partners, where they consider it appropriate.

The purpose of reviews of serious child safeguarding cases is to identify improvements to be made to safeguard and promote the welfare of children. Reviews should help to understand whether there are systemic issues and/or whether policy and practice need to change. Reviews should seek to prevent or reduce the risk of recurrence of similar issues.

Local safeguarding partners must make arrangements to identify and review serious child safeguarding cases which, in their view, raise issues of importance in relation to their area. Local arrangements must commission and oversee the review for those cases where they consider it appropriate that a review be undertaken.

### **Key functions**

The purpose of the local arrangements is to enable local organisations and agencies to work together in a system where:

- Children are safeguarded, and their welfare promoted
- Partner organisations and agencies collaborate, share and co-own the vision for how to achieve improved outcomes for vulnerable children.
- Organisations and agencies challenge appropriately and hold one another to account
- There is early identification and analysis of new safeguarding issues and emerging threats
- Learning is promoted and embedded in a way, that local services for children and families can become more reflective and implement changes to practice.
- Information is shared effectively to facilitate more accurate and timely decision making for children and families

To work together effectively, the arrangements should also:

- Facilitate and drive action beyond usual institutional and agency constraints and boundaries
- Ensure the effective protection of children is founded on practitioners developing lasting and trusting relationships with children and their families.

Within the arrangements, relevant agencies and safeguarding partners will need to:

- Assure themselves that relevant agencies have appropriate and robust safeguarding policies and procedures in place
- Ensure information is shared amongst relevant agencies and the safeguarding partners
- Communicate on a regular basis about the work that they will do together
- Have in place procedures for escalation and resolving disputes.

## **Relevant Partners/Membership of the Luton Arrangements**

Relevant agencies are those organisations and agencies whose involvement the safeguarding partners consider is required to safeguard and promote the welfare of local children.

Within Luton the relevant safeguarding partners have been identified as:

- Independent Chair & Scrutineer
- CAFCASS (Children and Family Courts Advisory and Support Service)
- Luton Borough Council including Housing, Children's Services and Public Health
- Luton Youth Offending Service
- Bedfordshire Police
- National Probation Service
- All Schools, colleges and other educational providers.
- Luton Sixth form College, & FE College
- Bedfordshire, Luton & Milton Keynes Clinical Commissioning Group
- East London Foundation Trust
- Cambridge Community Services
- Luton and Dunstable NHS Foundation Hospital
- Three lay members
- Third sector organisations

## **Links to other Boards**

To be effective, the Luton Multi-Agency Safeguarding arrangements for children will need to link into other local partnerships and boards such as:

- Bedfordshire Channel Panel
- Bedfordshire Local Family Justice Board
- Bedfordshire MAPPA Panels
- Luton Community Safety Partnership
- Luton Domestic Abuse Board
- Luton Drug and Alcohol Board
- The Luton Health and Wellbeing Board
- The Luton Safeguarding Adult Board
- Any Local Improvement Boards

## **Independent scrutiny**

The Multi-agency Safeguarding Arrangements must have in place arrangements for independent scrutiny which provide assurance in judging the effectiveness of the multi-agency arrangements to safeguard and promote the welfare of children in the local area. The scrutiny arrangements will also be involved in identifying and reviewing serious child safeguarding cases.



Safeguarding partners will need to ensure that the independent scrutiny arrangements are objective, acts a critical friend, and promotes reflection and drives continuous improvement.

Within Luton, it has been agreed that independent scrutiny will be carried out and overseen by an Independent Chair who is responsible for considering how effectively are safeguarding arrangements working for children, families and practitioners and how well are the safeguarding partners providing strong leadership.

### **Information sharing**

Multi-agency systems are strong when information is shared effectively amongst and between multi-agency partners to improve outcomes for children and families. Safeguarding partners (and therefore their multi-agency arrangements) may require any person or organisation/agency to provide them, any relevant agency for the area, a reviewer or another person or organisation/agency with specified information. This must be information which enables and assists the safeguarding partners and their arrangements to perform their functions to safeguard and promote the welfare of children in their area, including information related to local and national child safeguarding practice reviews.

As public authorities the safeguarding partners should be aware of their own responsibilities under relevant information law and have regard to guidance provided by the Information commissioner's Office when issuing and responding to requests for information.

### **Governance and Accountability**

The lead representatives for the local safeguarding partners have equal and joint responsibility for putting in place the local Multi-Agency Safeguarding Arrangements, within Luton these are:

- The Chief Executive of Luton Borough Council
- The Accountable Officer of Luton Clinical Commissioning Group
- The Chief Constable for Bedfordshire Police

In situations where a clear and single point of leadership is required, the three safeguarding partners will decide who will take the lead.

If the lead representatives chose to delegate their functions they remain accountable for any actions or decisions taken on behalf of their agency. It is the responsibility of the lead representative to identify and nominate a senior officer in their agency to have responsibility and authority for ensuring full participation in the local arrangements.

The representative or their chosen delegated officer should be able to:

- Speak with authority for the safeguarding partner they represent
- Take decisions on behalf of their organisation or agency and commit them on policy, resourcing and practice matters
- Hold their own organisation or agency to account on how effectively they participate and implement the arrangements.

## Multi-Agency Safeguarding Structure and Sub-Groups

The Multi-Agency Safeguarding Arrangements in Luton will be known as the 'Luton Safeguarding Children Board' and consists of:

- *Luton Safeguarding Children Board* – Overseeing, leading and scrutinising the multi-agency safeguarding work for children and young people in Luton.
- *A Luton Case Review Group* – This group is responsible for identifying serious safeguarding cases and taking forward local Safeguarding Practice Reviews.
- *A Pan Bedfordshire Co-ordinating Group* - Overseeing the work carried out by the sub-groups to implement multi-agency work around the agreed local safeguarding priorities.
- *A Pan Bedfordshire Policies and Procedure Group* – overseeing the development and updates of child protection policies, procedures and guidance across Bedfordshire.
- *A Pan Bedfordshire Voice of the Child* – A group taking forward consultation with children, young people, families and practitioners to help inform work and service provision.
- *A Pan Bedfordshire Performance Group* – This group is responsible for reviewing and scrutinising local Performance information and intelligence around safeguarding children.
- *A Pan Bedfordshire Learning and improvement and Training Group* – This group is responsible for taking forward a schedule of local multi-agency audits, implementing actions and embedding the learning and oversees arrangements for local multi-agency safeguarding training.
- *A Pan Bedfordshire Neglect Group* – This group is responsible for taking forward multi-agency work to implement the aims, objectives and actions outlined in the Bedfordshire Neglect Strategy
- *A Pan Bedfordshire Digital Safeguarding Group* – This group is responsible for taking forward multi-agency work to implement the aims, objectives and actions outlined in the Bedfordshire Digital Safeguarding Strategy
- *A Pan Bedfordshire Strategic CSE and Missing Group* – This group is responsible for taking forward multi-agency work to implement the aims, objectives and actions outlined in the Bedfordshire *CSE and Missing Strategy*
- *A Pan Bedfordshire CSE and Missing Operational (CSEM)* – This group is a multi-agency group looking to problem solve local issues in relation to CSE and Missing Children.
- *A Pan Bedfordshire Young People's Mental Health Group* – This group takes forward multi-agency work to help promote the mental wellbeing of young people.
- *Harmful Practices Meeting* – This group is responsible for taking forward multi-agency work to implement the aims, objectives and actions outlined in the Bedfordshire FGM, Forced Marriage and honour Based abuse Strategy.

- *Safer Borders Meeting* – This is a meeting held with Border Force Officers from Luton Airport to receive updates and understand any safeguarding issues relating to vulnerable people who may travel through Luton Airport.
- 

## **Reporting**

In order to bring about transparency the safeguarding partners must publish a report at least every 12 months which sets out what has been done as a result of the arrangements including information on child safeguarding practice reviews and how the arrangements have been in practice. The report should also include:

- Evidence of the impact the Multi-Agency Safeguarding Arrangements have had including information about training and the outcomes for children and families from early help to looked after children and care leavers.
- An analysis of any areas where there has been little or no evidence of progress on agreed priorities.
- A record of decisions and actions taken by the partners in the report's period (or planned to be taken) to implement the recommendations of any local and national child safeguarding practice reviews, including any resulting improvements.
- Ways in which partners have sought and utilised the feedback from children and families to inform their work and influence service provision.

The report should be widely available, and a copy of the report should also be sent to the National child Safeguarding Practice Review Panel and the What Works Centre for Children's Social Care within 7 working days of being published.

## **Publication of arrangements**

The Multi-Agency Safeguarding Arrangements will be published in accordance with Working Together 2018.

## **Dispute resolution**

Safeguarding partners will work together to resolve any disputes locally.

## **Funding**

Funding for the Multi-Agency Safeguarding Arrangements including covering the costs of local child safeguarding practice reviews will be agreed by the local safeguarding partners. Funding arrangements should be equitable and proportionate.

A review will take place within the year of 2020/21 – to be reported back to the Strategic Leaders Group by August 2020 for funding arrangements to be agreed for April 2021.

## Appendix B - Child Safeguarding Practice Review Flowchart

