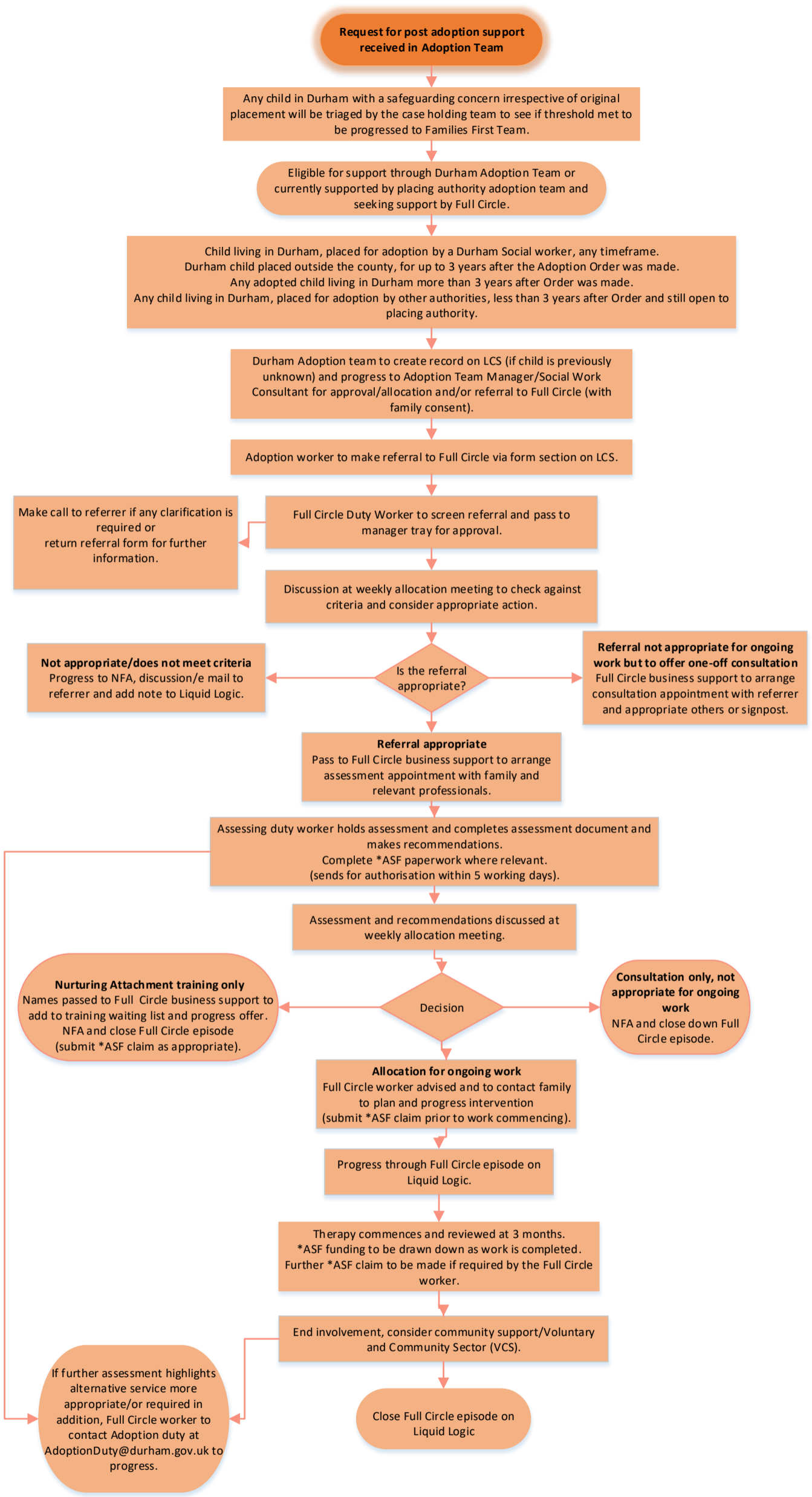


# Full Circle – Post Adoption Team Process



For any child referred to or open to Full Circle being where Step Up/Step Down is being considered, the Full Circle case worker/Team Manager/Social Work Consultant to be invited to Step Up/Step Down meeting or prior discussion held to ensure the Full Circle service can continue to be offered.

\*ASF – Adoption Support Fund