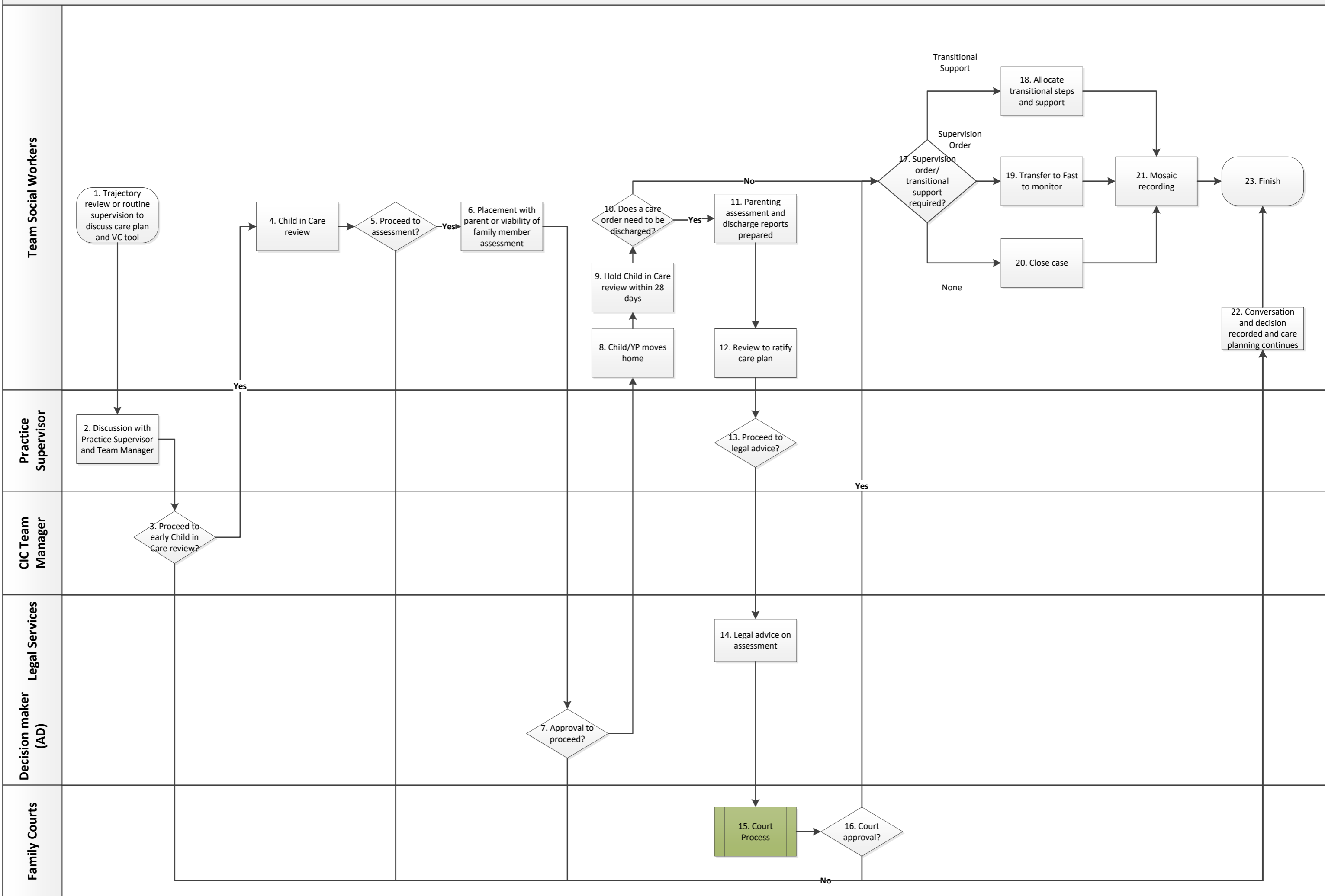


# Reunification – Care Order Process



## Summary of Process Steps:

No.	Step Name	Role	Description
1.	Trajectory review or routine supervision to discuss care plan and VC tool	Social Worker	Reunification can be brought up during regular reviews, supervision or discussions about care plans.
2.	Discussion with Practice Supervisor	Social Worker/Practice Supervisor	An initial discussion should take place.
3.	Proceed to early Child in Care review?	Social Work Team Manager	If yes, proceed to Child in Cre review (step 4). If no, the decision should be recorded and care planning continued (step 21).
4.	Child in Care Review	Social Worker	
5.	Proceed to assessment?	Team Manager	If it is decided not to pursue a reunification at this time, the decision and reason should be recorded and care planning continues (step 21).
6.	Placement with Parent or viability of family member	Social Worker	
7.	Approval?	Decision Maker	The decision maker (usually an Assistant Director) will make the decision to proceed. If it is decided not to pursue reunification at that time, the decision and reason should be recorded (step 20).
8.	Child/Young Person returns home	Social Worker	The child/young person returns home with plans in place for review within 28 days.
9.	Child in Care Review	Social Worker	A review should be held within 28 days..
10.	Does a care order need to be discharged?	Social Worker	
11.	Parenting assessment and discharge report prepared	Social Worker	
12.	Review to ratify care plan	Social Worker	
13.	Proceed to legal advice?	Practice Supervisor	.
14.	Legal advice on assessment	Legal Services	
15.	Court Process	Court (External)	
16.	Court approval?	Court (External)	
17.	Supervision order/transitional support required?	Social Worker	The social worker should proceed based on the instructions of the court – step 17 if transitional support is required, step 18 if a supervision order is required and step 19 if neither is required.
18.	Allocate transitional steps and support	Social worker	.
19.	Transfer to FAST for monitoring	Social Worker	If a supervision order of required, the child or young person should be transferred to FAST for monitoring.
20.	Close case	Social Worker	If not transitional arrangements or supervision order are required, the case can be closed.
21.	Mosaic recording	Social Worker	
22.	Conversation and decision recorded	Social Worker	If a decision is made at any point to not continue with the reunification at that time, the decision and reason should be recorded. Care plan and Valuing Care tool should be reviewed again.
22.	Finish		