

Northumberland PREVENT Pathway

PREVENT is about working together to safeguard and support people who might be vulnerable to radicalisation.

If a person is being radicalised, their day-to-day behaviour may become increasingly centred around an extremist ideology, group or cause. Some of the signs of radicalisation could be:

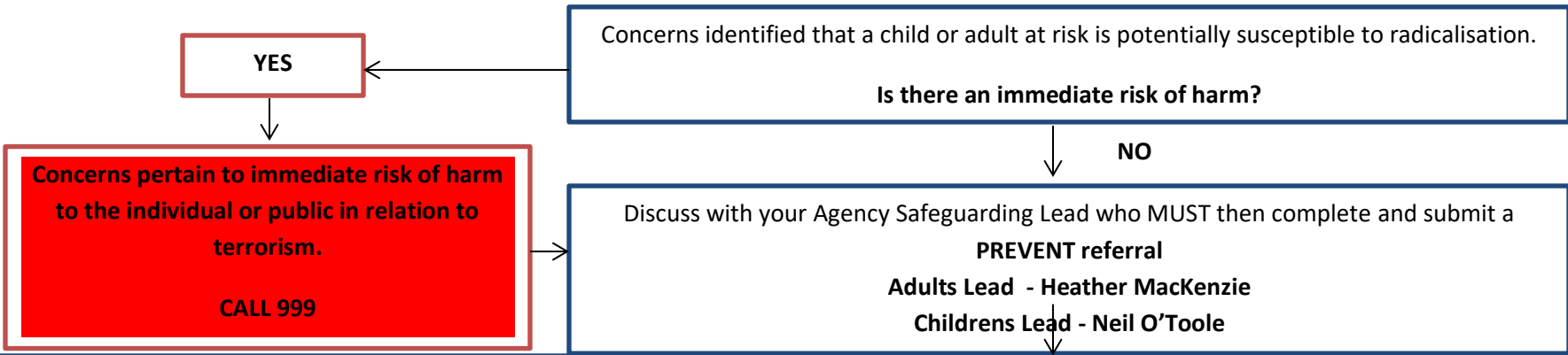
- spend increasing amounts of time talking to people with extreme views (this includes online and offline communication)
- changing their style of dress or personal appearance
- losing interest in friends and activities that are not associated with the extremist ideology, group or cause
- possessing material or symbols associated with an extreme cause
- trying to recruit others to join the cause

I'm concerned someone is at risk of radicalisation. What should I do?

- Report your concerns to the local authority that the person you're worried about lives. You can find the contact numbers and where to get in touch below.
- Remember: PREVENT does not criminalise those who are referred. We aim to safeguard and help those at risk.

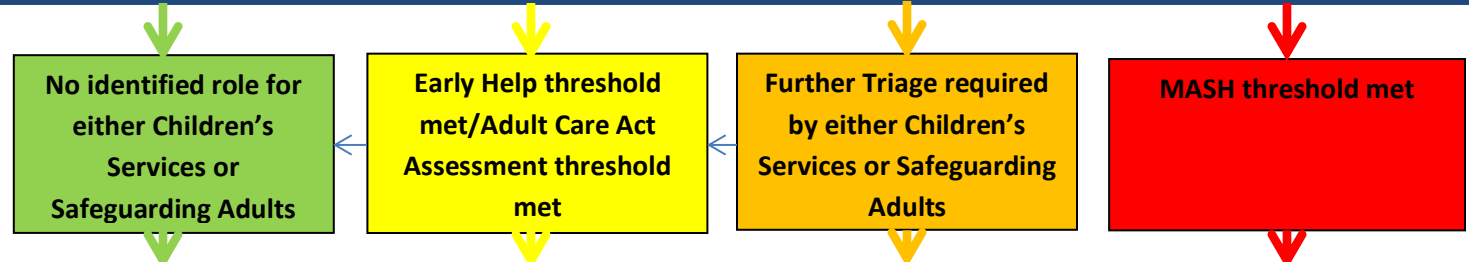
Key Contacts

Chris Grice	- Prevent Lead Strategic Community Safety prevent@northumberland.gov.uk
Neil O'Toole	- Prevent Lead Children's Services neil.o'toole@northumberland.gov.uk
Heather MacKenzie	- Prevent Lead Adult Services Heather.MacKenzie@northumberland.gov.uk
Counter Terrorism Policing North East (CTPNE)	- fimunorth@ctpne.police.uk
Onecall	- 01670 536400
Children's Triage	- childrentriage@northumberland.gov.uk
Adult Triage	- safeguardingreferrals@northumberland.gov.uk
PREVENT referral Form	- Northumberland Prevent Referral Form



Referral received

Discussion to take place between CTPNE, Children's Services Team Manager and Adult Safeguarding Team Manager to establish thresholds, roles and responsibilities

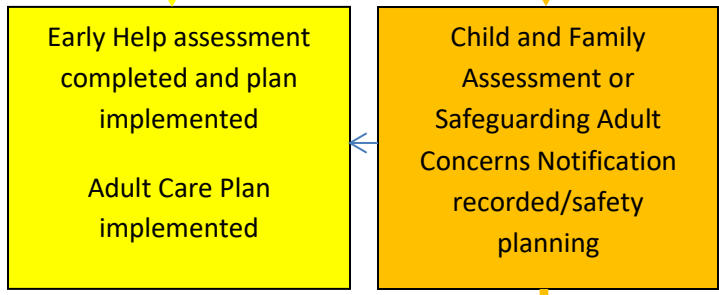


Prevent Leads and Coordinator Notified by Team Manager of outcome

Childrens or Adults Team Manager inform CTPNE who will complete agency checks within 10 working days

CTPNE to Assess Criteria for Channel Panel

Potential Outcomes:
Threshold for Channel Panel met
VAF prepared by CTPNE
Referrer to attend Channel Panel
Case considered at Channel Panel
Referrer notified of outcome



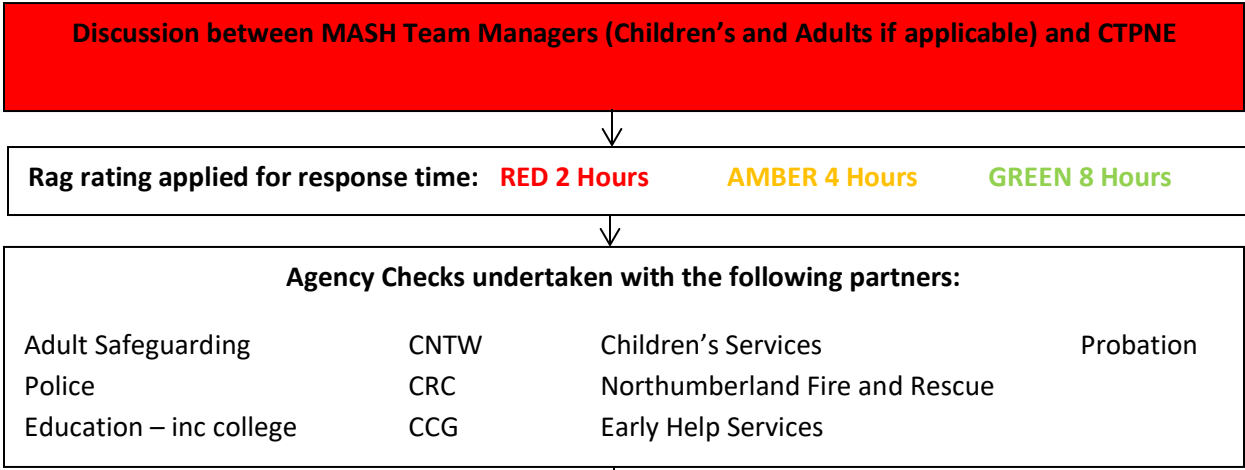
Child in Need Plan identified

MASH Pathway:

- Triage to progress case to MASH manager
- Prevent Leads notified case is in MASH
- Neil O'Toole
- Heather MacKenzie
- CTPNE
- Continue to MASH Pathway**

Threshold for Channel Panel not met
Signpost to other services
Referrer notified of outcome

MASH PREVENT threshold met



Research received and further discussion with Team Managers, Police and Prevent Lead for Safety Planning and thresholds to be discussed. **MASH episode form sent to CTPNE.**

CTPNE to Assess Criteria for Channel Panel

Potential Outcomes:
 Threshold for Channel Panel met
 VAF prepared by CTPNE
 Referrer to attend Channel Panel
 Case considered at Channel Panel
Referrer notified of outcome

Threshold for Channel Panel not met
 Signpost to other services

Referrer notified of outcome

