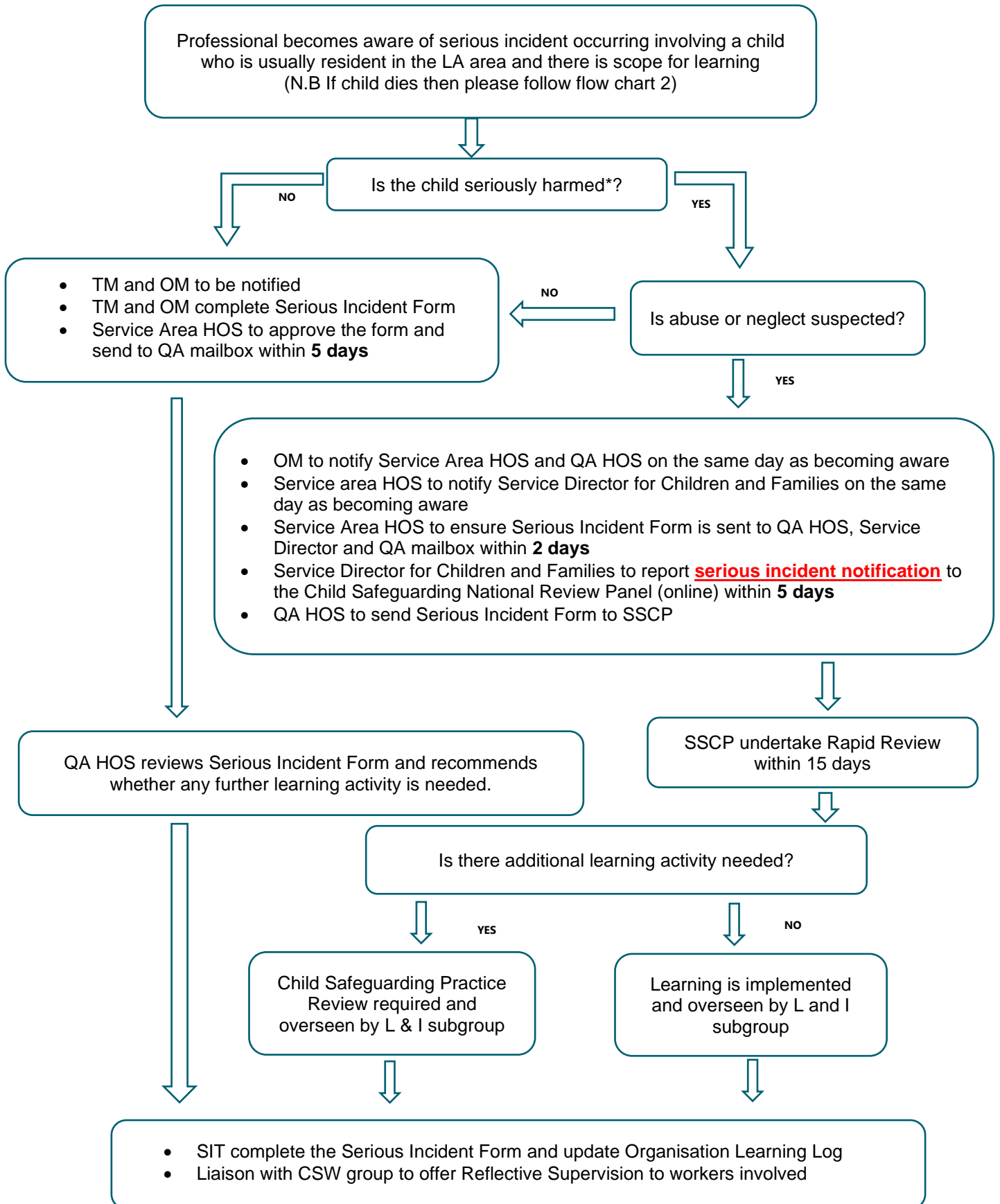
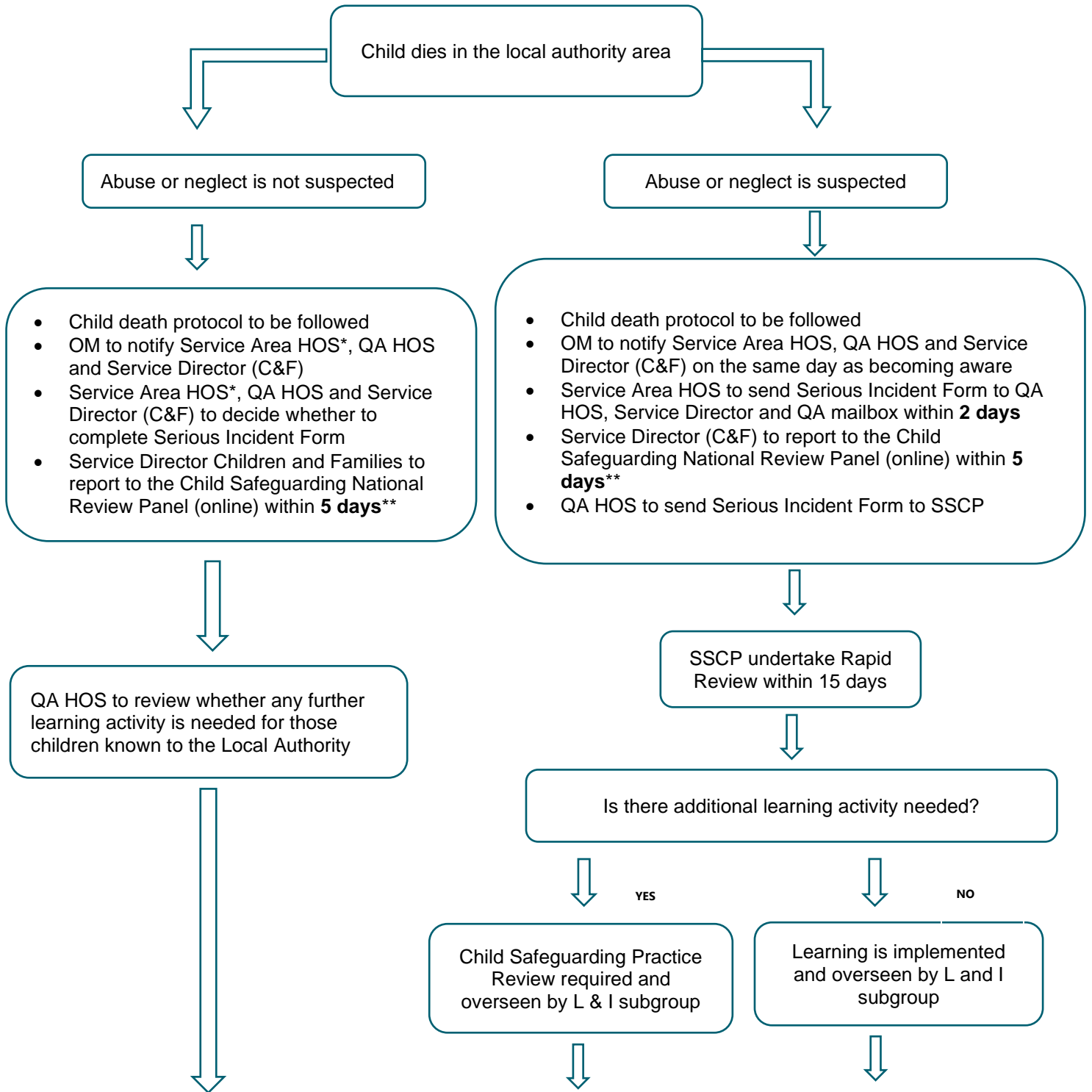


Appendix A: CSC and YJT Serious Incident Response Flowchart 1



*Serious harm includes (but is not limited to) serious and/or long-term impairment of a child’s mental health or intellectual, emotional, social or behavioural development. It should also cover impairment of physical health. This is not an exhaustive list. When making decisions, judgment should be exercised in cases where impairment is likely to be long-term, even if this is not immediately certain. Even if a child recovers, including from a one-off incident, serious harm may still have occurred.

Appendix B: CSC and YJT Serious Incident Response Flow Chart 2



*Out of hours : EDT to notify on call manager who notifies Service Director (Children and Families)

**Once notified the Service Director (Children and Families) will:

1. Contact the DCS and provide a verbal briefing, agreeing which other senior officers and members should be informed
2. Provide a written initial briefing to the DCS, the Lead Member for Children and the CEO

Out of hours - high level written briefing to the DCS, lead Member for Children and the CEO. Discussion with DCS next working day unless there are sensitive issues which require urgent discussion