

# Special Education Needs and Disabilities – One Page Summary.

**Our vision** is for all children and young people with special educational needs and disabilities to **dream, believe and achieve**, and **fulfil their potential**.

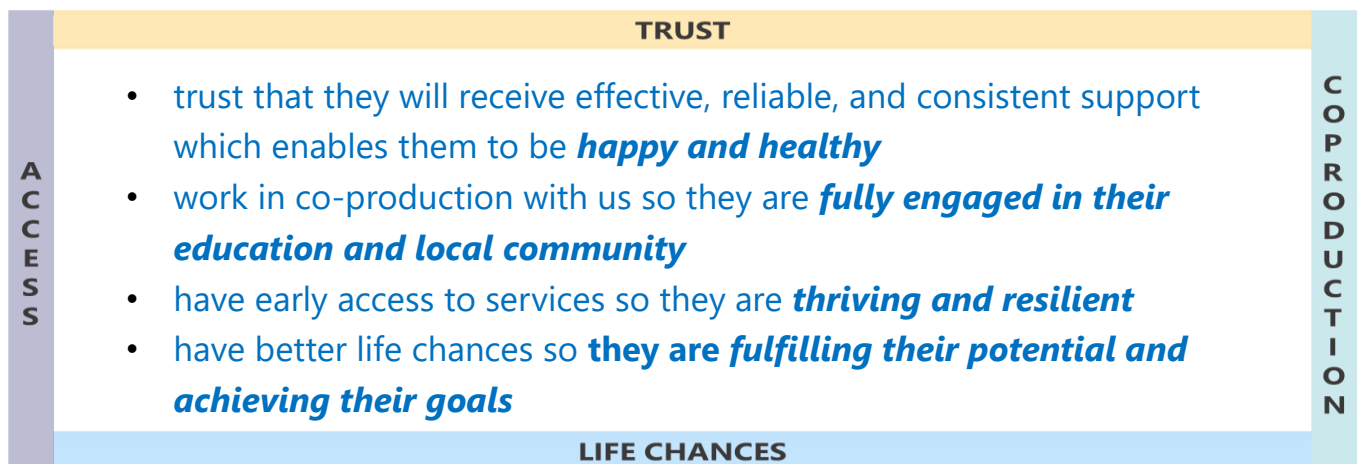
## **Our key priorities - Trust, Co-production, Access, Life Chances**

**For children and young people with SEND and families, we will:**

1. Build **trust** by:
  - ✓ listening, hearing and understanding
  - ✓ doing what we said we would do, and keeping them informed
2. Provide opportunities to **co-produce** by:
  - ✓ working together to shape services
  - ✓ supporting them to make informed choices about the care and support they receive
3. Provide **access** to help and support which is:
  - ✓ early, easy to access, and provided through a system which is easy to navigate
  - ✓ met in the right way, at the right time, by an integrated service
4. Support the **life chances** of children and young people with SEND:
  - ✓ by having high aspirations for them to achieve
  - ✓ preparing them for life, by gaining the skills to become independent and thrive



## **Our outcomes are that children and young people will be able to**



### **To achieve this, we will focus on**

- Embedding our 4 priorities (as above) into practice
- Providing **early and effective support** by transforming the way services are delivered and working in a more integrated way (SEND Transformation)
- Improving our **communication**
- Ensuring EHCP **plans and reviews are timely and of good quality**
- Providing **timely access to services** with a focus Autism, Speech and Language and Social Emotional Mental Health needs.
- Ensuring **inclusive Education** for all children and increasing the number of **special school places**
- **Planning better for Adulthood** and ensuring every young person has **access to education, employment, or training opportunities and appropriate health provision**