

Levels of Vulnerability, Risk and Need

Appendix 1 Continuum of Need

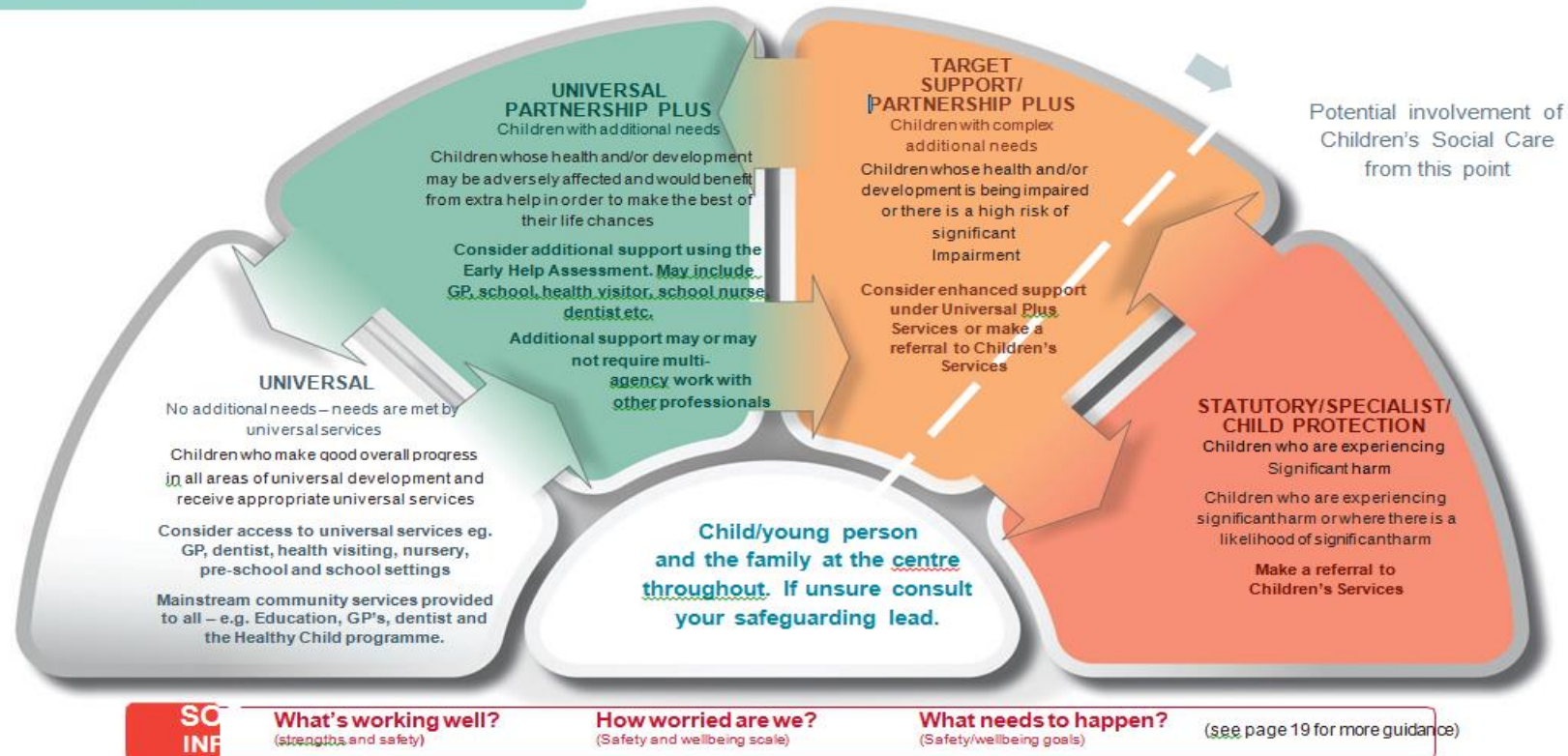
The Think Signs of Safety Principles

- Establishing constructive working relationships
- Encourages critical thinking and maintains appreciative enquiry
- Staying grounded – day to day work – child protection

Ask yourself the 4 key questions. What are you worried about (past current/future harm and danger)?

The spectrum of support and the relationship between the different levels of need

- A child's level of need can move forward and backwards across the continuum highlighting the importance of integrated service delivery, providing a seamless process to ensure continuity of care when a child moves between different levels of support.
- The whole system highlights the importance of always having a practitioner in place to co-ordinate service activity and to act as a single point of contact.



Title page
p1

p2

Continuum of Need Model
p3

Levels of Vulnerability, Risk & Need
p6

Indicators of Need and Intervention Criteria
p7

Key Guidance BSCB
p15

Key Guidance Child Neglect
p16

Key Guidance Domestic Abuse FGM
p17

Key Guidance Child Exploitation Radicalisation
p18

Key Guidance Signs of Safety
p19

Glossary of Terms & Useful Links
p23

page 06